

SAIL & SCALE

NEWSLETTER OF THE EDINA MODEL YACHT CLUB

June 2000

Volume 9, Number 6

Commodore's Corner: June is perhaps our most exciting month of the year! The Parade of Boats is on Sunday, June 11th. I definitely would like to see you all there. John Bishop has submitted a schedule and all the information you will need to know about the Parade of Boats in this newsletter.

I would like to add that we are expecting this event to be a success, but the only way it can be is if we get all the members to participate. Please plan to be a part of the show and get there early. This year we will again have door prizes, and some of the Centennial Lakes restaurants have donated food.

The meeting this month will be a short one featuring a recap of the Parade and member's projects followed by open boating on the center pond. If your working on a project this summer bring it to the meeting and share it with the club.

I hope to be seeing you at the lake.

Dale

Publicity: KMSP, channel 9 wants to help to publicize the parade of boats by featuring us on their 7 - 9AM morning show. They will come to the pond and shoot us live during their morning show and interview a few members.

The catch is; we need as many guys / gals with working boats as possible to show up at the Central pond by **7:45AM on Thursday, June 8**. Bring several boats even if you can only drive one. Bring your kids, grand kids or steal one out of a shopping cart at Wal-Mart! (Kidding!) Any questions? Give me a call at [REDACTED]

Tim Smalley

Early News: This newsletter is in your hands more than one week early, because, we want to get you out to the TV shoot this Thursday (and Tuesday...see below) and to remind you one final time to participate in the Parade of Boats...this coming Sunday. We need you there! We want you there! Let's have a record turnout! Free coffee, free pop, free donuts, free pizza, free burgers, free prizes!

SOS! SOS! This, just in! Eric Perkins wants us on his "Perk at Play" TV show at **6:00PM on Tuesday, June 6th**. This notice may not get to you in time, but if it does, please "Come on Down!"

Parade of Model Boats: Our big annual Parade of Model Boats show will take place on Sunday, June 11th. In previous years the show has been a big success, and I'm sure that with the current level of interest we can expect another great event. We expect about 150 boats again this year, and that would represent only about one half of the current EMYC inventory. A new boat you certainly won't want to miss this year is Kirk Brust's "Nautilus", unveiled in detail at last month's meeting.

Following are some highlights of the show for 2000. The show will occupy a good part of the day so please plan accordingly. The initial Centrum Building setup will begin at 9:00 AM. This should give us a relaxed, two hour time period to get organized before the 11:00 AM start time. As usual, tables will be placed according to the master plan which will group our boats according to type and class. The Centrum building will contain the general display, building/construction, Ships-in-a-Bottle, and membership/information areas. The one hour indoor display, social hour will once again prevail from 11:00 AM until noon; this has always been a club favorite. The R/C running schedule will take us from noon until 4:00 PM.

Please fill out a display card for each boat that will be displayed in the Centrum. Three blank display cards are included in this newsletter for your convenience. The cards will be placed in a wooden stand in front of each model. The purpose of the card is to provide information to the general public about your boat. Also, a copy of a "Ships Log" form is enclosed for you to fill out and bring to the show for each boat you plan to run (please make copies of this log as needed for each boat that you are planning to run). If you have a photo of your boat please attach, if not, please provide a simple sketch on the log. The purpose of this log is to provide information to our announcer, information that can be passed along to the general public while your boat is on the water.

Please read the Parade 2000 details on the following pages for more detailed information.

John Bishop

Watch Out!: A movie based on the book, "The Perfect Storm" will hit local theatres on June 30th.

Membership Meeting, 5/16/00: Commodore called meeting to order at 7:00PM. 39 members and guests in attendance. Hobby shop in Oakdale has no Parade poster. J.Gilbertson will deliver same, along with flyers. J.Bishop gave presentation on Parade. He noted that there are plenty of flyers in the clear plastic case just inside the Centrum door. Commodore stated that numerous prizes are arriving from manufacturers and dealers. Several boat kits, a Dremel tool, a bunch of 40-50-% off certificates, etc. Midwest is donating a kit to be raffled off between any new members that sign-up during the event. All donors will be acknowledged in the July newsletter, and hopefully, by letters of appreciation from the winners. Media coverage is being sought, however, it won't be as extensive as in 1999. Next year's show is already booked for the second Sunday in June. Tom Shirley was quoted as saying that the pond will be treated for weeds two times prior to June 11th. He also advised that the new PA system will cover all spectator areas. Member, and ex-park manager, Bill Bach will act as our announcer once again, this year. Ship Log, loose leaf binder will be used. If you have new vessels, be sure that there is a new page for each one. Coffee, pop and donuts will be available to participants at no charge. Centennial Lakes restaurants have been asked to support the event. No response yet. Radio Disney event

on June 10th is "guaranteed" to not adversely affect our event. Centrum will be staffed with at least eight members at all times, for increased security. Set-up at 9am. Group meeting at 11am. Public arrives shortly thereafter. T.Spletstoeser will be in charge of getting boats on the water. Please cooperate with him. R.Jester will attend to frequency control. His station will be just outside the Centrum, adjacent to our launch site. Skipper's area will be blocked off with snow-fence type plastic webbing to prevent spectator intrusion.

Jim Smith

Show-n-Tell: K.Brust displayed his winter project, a five foot version of Disney's and Captain Nemo's submarine, *Nautilus*. This 50 pound (estimated) baby has a complete interior including carpeting and furniture and sports 25,000 external rivets...but who's counting? Don't miss this fiberglass beauty at the Parade. D.Bros displayed his kit boat, *Helen*, which he had named for his grand daughter, *Katherine*. Another neat boat. Unfortunately, I sold my *Helen* kit at last year's swap meet. J.Bishop showed off a small static model which he purchased at the Toy Boat Show. He had added much exterior detail. W.Freeman showed off his latest miniature steam turbine. It ran fine on compressed air. Now! All Warren needs is a source of a sufficiently large supply of steam.

Jim

Schedule Of Upcoming Events

	Every Sunday	Open Boating	4:30PM - 9:00PM
	Every Tuesday	Open Boating	5:30PM - 9:00PM
	Every Thursday	Open Boating	5:30PM - 9:00PM
Jun.	10 th (Sat.)	Radio Disney Summer Blast	Central Pond 10:00AM - 3:00PM
	11 th (Sun.)	Parade of Boats	Centennial Lakes Centrum 10:00AM - 5:00PM
	20 th (Tue.)	Membership Meeting	Centennial Lakes Centrum 7:00PM - 9:00PM
Jul.	18 th (Tue.)	Membership Meeting	Centennial Lakes Centrum 7:00PM - 9:00PM
Aug.	5 th (Sat.)	Wisconsin Maritime Museum Show	Manitowoc, WI 12:00PM - 9:00PM
	6 th (Sun.)	Wisconsin Maritime Museum Show	Manitowoc, WI 10:00AM - 4:00PM
	15 th (Tue.)	Membership Meeting	Centennial Lakes Centrum 7:00PM - 9:00PM
	19 th (Sat.)	Antique & Classic Boat Show	Treasure Island, MN 10:00AM - 6:00PM
	20 th (Sun.)	Antique & Classic Boat Show	Treasure Island, MN 9:00AM - 4:00PM
	20 th (Sun.)	Lighthouse Night	Central Pond 7:00PM - 9:00PM

Batteries: Radio Shack shows 7- six volt and 10-twelve volt sealed, lead acid batteries in their latest catalog. The 6 volt batteries range from 1.3Ah to 12Ah while the twelves run from 1.3Ah to 40Ah. You should be able to find something to power your creation from this selection. Pick up a catalog at your local Radio Shack, [redacted] They're also on the web at: www.radioshack.com *John Bishop*

Paint: A list of all 56 Marine Acrylic paint colors mentioned in last month's newsletter can be found on Badger's web site at: www.4wynwyn.com

Pittman: Bloomington AxMan has a good supply of Pittman, 30.3 volt, #9414 motors priced at \$7.95. I installed one of these in my new 33", 12 pound trawler, "Katherine" (Artesania Latina, "Helen" kit). Surprisingly, it easily swings a 60mm, three bladed prop and propels the boat at more than scale speed...using only 12 volts. At 12 volts, stall current draw is less than 3 Amps. The motor is similar to the Dumas 12v motor...at 1/6 the price!

Dave Bros

(According to Pittman specs, under no load, the 9414 motor turns 7666 rpm at 30.3 volts [stall current, 4.73 Amps]. Therefore, at 12 volts, it should turn at about 3036 rpm under no load and draw about 2.9 Amps at stall. Ed.)

Final Details- Parade of Model Boats 2000

by John Bishop

The Parade of Model Boats show will take place on Sunday, June 11th, from 11:00 AM to 4:00 PM, with the setup beginning at 9:00 AM. The show is planned to provide entertainment for the general public and to introduce the hobby of radio controlled model boating. But equally important, it is a chance for our club members to meet new people, display and run all types of boats, and have some fun for a day. It is our club's main event of the year and has proven to be very enjoyable and rewarding for those that participate. Be advised that if thunderstorms and rain showers are forecast or weather does exist, the Parade show will continue as an indoor display until conditions permit us to run outdoors.

The **Centrum building**, located in the heart of the Centennial Lakes development, serves as a focal point for our show. Within the building, the atrium (entry area) will accommodate our membership and information tables. Overflow tables can be setup as well, if needed, to display additional boats. A room adjacent to the atrium will allow club members to store personal items such as radios and allow for charging and maintenance of equipment. This "back room" will not have public access and only those with an EMYC name tag will be allowed to enter. Charging and repairs may also take place within this area. The Fireside and Parlor rooms together will comprise the space needed for our indoor display.

Registration will take place at your leisure before 11:00 AM at the Membership table. We'll have you list your name and the types of boats you're bringing to the show, prepare your display cards, and complete Ship's Log forms. It will be quick and simple and will provide for a more organized and professional looking show. Equally important, this process will register participating EMYC members for a free drawing of many model boat-related products provided just for the show. Details of the drawing will be discussed during the 10:45 AM pre-show meeting. Please plan to be present at Centennial Lakes before noon so you won't miss out on this part of the show.

The **Indoor display** is a great opportunity for you to show your boat(s) within the Centrum building and you are encouraged whenever not running to have your boat(s) in this area. The room will be watched over by EMYC members at all times. More than 100 boats can be displayed in this large 2000 square foot room. Boats will be organized on the tables according to their type. Individual information cards will be placed in front of each model on display. During the initial setup from 9:00 AM to 11:00 AM, Doug Person will be on hand to direct the placement of models within the Centrum building for display. Please look for him upon your arrival. Cars may be driven up to the Centrum building before and after the show for loading and unloading of equipment.

There will be three tables containing current projects under construction in the **Builders Corner**, located in the southwest part of the display room. If you have something interesting in the works that you think others might enjoy seeing, please plan to bring them and we will accommodate as many items as we have space. This display often gives those not associated with the hobby a better understanding of the work and effort involved in finishing a model boating project. If you have an interest in staffing this area anytime during the show please see John Bishop before 11:00 AM.

The ever popular **Ships-in-a-Bottle** table, presented by club member Donald Pearson, will be present for the third year in a row. Make sure you set aside a few minutes during the show to see his superb modeling talents.

The **Membership and Information** tables will provide information for our members and the general public. EMYC members will have access to name tags, Ships Log forms, information cards for models on display, and schedule of events sheets. The information table will act as a resource area for handing out literature. The general public can pick up information here about the hobby of radio controlled boating, the organization of the Edina Model Yacht Club, and information about the group and its activities. If you don't know the answer to a question please direct people to this area. These tables will be located in the entry of the Centrum building.

The **Central Pond** located just outside of the Centrum building is where we will run our equipment during the show. The stairs just to the southeast of the display room will quickly and conveniently take us to the water. A newly protected running area will be setup for club members this year. EMYC members will control model boats within a fenced-off 25' zone adjacent to the stairs that lead down to the water.

Frequency Control will allow us to track 36+ channels for independent operation of the boats. The frequency board will be used during the entire four hour running period and if you run you will need to have a clip attached to your transmitter antenna displaying the frequency you're on. No powering up or testing of equipment (even in the back room) will be allowed unless you have secured a clip from the frequency board. If you have finished running, please return the clip promptly. Conflicts will be resolved by sharing the available time for an event, or by changing out crystals. You may want to have an extra set of crystals in case a frequency conflict arises.

The **Schedule of Events** for Sunday June 11th is listed below. It begins with a two hour setup period, a one hour indoor display, followed by a four hour running period. The running program is organized in such a way that at least three opportunities to run just one type of boat will exist during the show, making it possible for everyone to have plenty of time on the water. A copy of this schedule will be available at the membership table and will also be handed out just prior to the start of the show.

9:00 AM	Setup indoor membership and information, building, and display areas. Setup outdoor running and frequency control areas. Skim water in central pond and clean running area. Setup and test outdoor P.A. and music systems. Display signs.
10:45 AM	Club Meeting in Centrum building. Review details of the show including indoor display, schedule, frequency use, EMYC drawing, etc.
11:00 AM	Indoor Display within the Centennial Lakes Centrum Building. All boats will be on display. This is a great opportunity for club members to get reacquainted again and browse around the room to see new projects. It also a great time for the general public to collectively see all the boats and builders in one place.
12:00 PM	Open Boating/Open Water A general introduction to the Edina Model Yacht Club and the hobby of radio controlled boating will be presented during this segment. The highly-polished speaking skills of Bill Bach are once again welcomed. Everyone is invited to run during this half-hour time period. This opening event is set up so as to show the variety and diversity of R/C boats among the membership of the EMYC. Ships log forms will be used to describe boats on the water. *Special one-run-only ore carrier from George Pfeifer will debut during this time period.
12:30 PM	Tugboats and Work Boats. Display of features and operating equipment on various boats. *Special smoking barge segment. Boats with water cannons will "put out" fire.
1:00 PM	Sailboats of all types and classes; Fairwinds, AC-914's, Marbleheads, EC12's, etc. Open class regatta planned by Tony Johnson and his sailing group.
1:30 PM	Fast Electric Boats display of individual high speed electric boats. Racing event planned by Doug Campbell and Dan Proulx and their high speed electric group.
2:00 PM	Military Boats flotilla including PT's, destroyers, battleships, subs, etc.
2:30 PM	Scale Boats including pleasure craft, ore carriers, paddle wheelers, steam powered, etc.
3:00 PM	Tugboats and Work Boats. Display of features and operating equipment on various boats. *Special smoking barge segment. Boats with water cannons will "put out" fire.
3:30 PM	Open Boating/Open Water all types of boats allowed to run during this half-hour period. Those running past 4:00 PM will be responsible for their own frequency use.

Additional items: Food may be donated from several Centennial Lakes restaurants for EMYC consumption (details are currently pending). Food is available for purchase from the surrounding complex and covers everything from fast to fine dining. EMYC members will be able to relax within an environment of couches and chairs throughout the day in the back room. Coffee and donuts will be available in the back room as well. Benches and chairs will be set up outside for spectators' comfort. Paddle boats will be rented out but will not be allowed to run beyond the flagged-off area just east of the Centrum building. The water of Centennial Lakes will be treated 5 days prior to the show.

This newsletter is sent out to club members, local hobby shops, and several R/C boating clubs in surrounding areas. If you are not a club member but would like to participate in this event, please feel free to attend and run with us. No advance reservation is required, but please contact John Bishop [REDACTED] for planning purposes. Visiting guests this year are coming from Northern Minnesota, Canada, Wisconsin, Illinois, Indiana, and Missouri. We look forward to seeing everyone on June 11th.



Ships Log

Ship Name: _____

Ship Type: _____

Ship
Length: _____ **Beam:** _____ **Scale:** _____ **Weight:** _____

Builder: _____

Owner: _____

Ship named after: _____

Misc. Information:

These are name cards we will be using for the Parade of Boats, Sunday, June 11. These cards will be placed in next to your boat on the display table.

1. Fill out one card for each boat you will be displaying. Because this is the card that will be shown with your boat, please write clearly.

Ship Type is Workboat, cup yacht, etc; Power is electric, steam, wind.; Channels is the number of channels used; Kit Mfg is the manufacturer of the kit, or Scratch. The bottom section can be used for other information or notes.

2. Cut out each card, based on the crop marks, and glue it to a piece of card stock. We will provide stands.

If you need more copies of this, please call Dale Johnson at [REDACTED]

SHIP TYPE	
SHIP NAME	
SCALE	POWER
CHANNELS	KIT MFG
OWNER	

SHIP TYPE	
SHIP NAME	
SCALE	POWER
CHANNELS	KIT MFG
OWNER	

SHIP TYPE	
SHIP NAME	
SCALE	POWER
CHANNELS	KIT MFG
OWNER	

Product Review: The **Hobbico VoltWatch**, on-board receiver battery monitor (Part number HCAP0330) is available from Hub Hobby in Richfield or by mail order through Tower Hobbies (probably other sources as well) for about \$15.

This simple (1 3/4" x 1" x 1/8", 2/10 oz) voltmeter tells you the voltage of the receiver battery pack in an easy-to-read format and only draws 11 mA.

Mounting: (2) 1/16" holes- I suggest tightening with screws only until secure, do not over tighten. Double-faced 1/16" foam pad included. Another mounting option is to use Velcro (not included).



Voltage Indications: The following are the voltage readings obtained for each Light Emitting Diode (LED). The chart is compiled from high to low voltage. Only one LED will be illuminated at a time.

Green	5.11 Volts and higher
Green	5.01 to 5.10 Volts
Green	4.91 to 5.00 Volts
Green	4.81 to 4.90 Volts
Yellow	4.71 to 4.80 Volts
Yellow	4.61 to 4.70 Volts
Red	4.60 Volts and lower

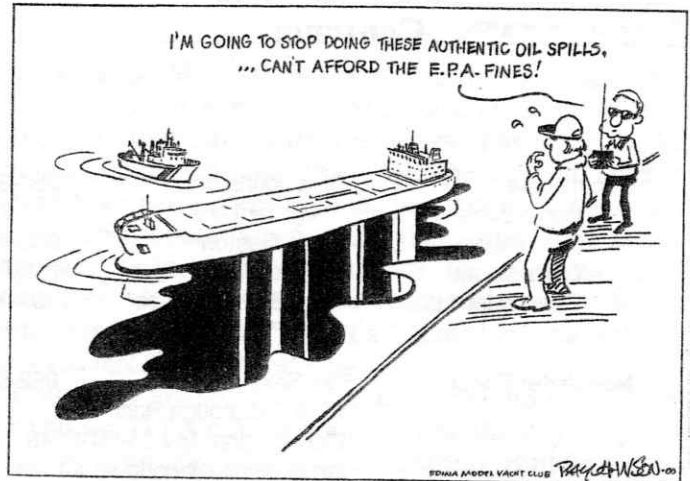
Interpretation: Read the VoltWatch unit as though it were a stoplight. Green/Go- receiver battery strong. Plenty of power to operate all components connected to the receiver system. Yellow/Caution- receiver battery power weakening. Be cautious in running and operating equipment. Red/Stop- time to recharge NiCad receiver battery pack. Integrity and operation of receiver cannot be predicted. Servo twitching may occur, loss of signal to boat may occur and boat may quit operating on the water. Many receiver systems begin to shut down at 4.3 Volts so this meter is conservative but is also set perfectly for displaying proper voltages to monitor. Voltage indications will fluctuate as servos and other components tied into the system operate. Operating one servo typically draws down the receiver battery pack by .1 Volt. Operating 2-3 servos will draw down the receiver battery pack by .2 volts. This will explain why the LED indications will vary as the equipment within the boat is operated.

This unit is wired with a Futaba J connector. Simply plug this connector into any unused receiver channel slot. If all channels are being used, a "Y" connector will allow the meter to be incorporated into the system. If you have equipment other than Futaba, check your specific wiring compatibility relative to Futaba. A good hobby shop will know how to handle wiring alterations as well.

John Bishop

(Editor's Note: The VoltWatch unit is only useful if you use a separate receiver battery in your boat. If a battery eliminator circuit (BEC) powers your receiver, the VoltWatch will always read approximately 5 volts...until your primary power battery falls below that value. In this case, you'd be better off with a volt meter that reads primary battery voltage directly)

Warning: Be observant when buying Ni-Cd batteries. A club member was recently "burned" at a local hobby shop. Of four cells purchased as new, all were manufactured between three and four years ago! Two of them were useless. Remember, the first letter of the two letter code printed on Sanyo cells indicates the year of manufacture, (e.g. A = '96, B = '97, C = '98, D = '99, E = '00), while the second letter indicates the month, (e.g. A = Jan., B = Feb., etc.). Try to purchase cells all having the same code.



Welcome Aboard, Welcome Back! As the result of the following gentlemen *joining us or *renewing their membership during the last month, our list of members now exceeds 100.

- Donald Stephens Golden Valley
- Richard Stephens Golden Valley
- Joe Steele Eden Prairie
- *Rod Crawford Excelsior
- *Dean Dahlen Bloomington
- *Chip Evans Minneapolis
- *Brian Finks Bloomington
- *Richard Jacobson Bloomington
- *A.J. LaVenture Edina
- *Donald Pearson Deephaven
- *Michael Semsch Edina
- *Nathan Semsch Edina
- *Christopher Traiser Woodbury

Awards: The Radio Control Hobby Trade Association (RCHTA) Media Awards program is in full swing again for 2000. If you see coverage of our event in a magazine or newspaper, please forward it to me. Likewise, if you video tape any TV coverage, send me a copy. Perhaps we can "win big" again. *Jim*

USS Kidd: Do you remember Bob Steinbrunn's magnificent destroyer model that we had the pleasure of seeing at the March meeting? Well! Bob did quite well at the Mariner's Museum Scale Ship Competition. He garnered a Gold Medal in Division III, Kit Built, the special United States Navy Award, and what else? The August F. Crabtree Award for BEST IN SHOW!

June Meeting Notice:

(Third Tuesday of the Month)
Tuesday, June 20th
7:00 P.M.

(Board Members Available at 6:30)
Centennial Lakes
Centrum

WANTED: *Fairwind* -- hull only.
Any condition. Painted, or un-painted. Used
or un-used. I am interested. Give me a call!
Fred Ferris [REDACTED]

Commodore:	Dale Johnson
Vice Commodore	Doug Campbell
Vice Commodore	Diego Gaston
Vice Commodore	Tim Smalley
Vice Commodore	Terry Spletstoeszer
Treasurer	Gary Phillips
Newsletter Editor	Jim Smith

Web Site: www.emyc.org

EDINA MODEL YACHT CLUB
CENTENNIAL LAKES CENTRUM
7499 FRANCE AVENUE SOUTH
EDINA, MN 55435

First Class