

EDINA MODEL YACHT CLUB

SAIL & SCALE NEWSLETTER

APRIL 2004

VOLUME 13, NUMBER 4

EMYC CLUB HISTORY MONTH

Early this year Terry Mackey contacted me for some information on how the club got it's start for a article he was writing. Having joined in the summer of 1997 I really had only a sketchy idea of how or when the club got started. I had to refer him to one of our founding members, John Bishop, for some help on the project.

John came up with a copy of an 1994 article which appeared in the U.S. Boat & Ship Modeler that he gave to me and a few other members to answer some of our questions on the clubs origin. He also suggested an idea for a "tie-in" using the old article in the newsletter and having Bill Bach come to a meeting and answer some questions members might have.

I thought the article was very interesting and can give you an insight on where the club was in the time span of 1991-1994. We have come a long way over the years with many members making the club what it is today, but it all started with Bill Bach.

We have reprinted the Edina Model Yacht Club Sails to Success article for your information and enjoyment. (See Page 3)



The existence of the Edina Model Yacht Club is due in large part to the efforts of Bill Bach. He was instrumental in organizing the club back in



Bill Bach

1991 and worked with others to establish the group as a non-profit entity and also coordinate its excellent on-going relationship with the city of Edina. Without his early involvement, the club couldn't be what it is today. Many members have asked questions about our history and Bill has been invited and has agreed to discuss these items during our Tuesday, April 20th meeting at 7:00 PM. He's a great speaker and a very motivational individual and I'm sure you'll find his historical review very interesting.

—John Bishop

SCHEDULE OF EVENTS:

April 20, Tues7:00-9:00 p.m.Membership Meeting
April 24, Saturday9:00 a.m.Sail Boat Tune-Up

COMMODORE'S CORNER



It's great to see such a fine turnout for the meetings. Enthusiasm is running at a very nice level. Thirty-five people have signed up for positions at

the Parade of Boats in June.

Suggestions for club activities are coming in at a good pace—keep them coming!

We still need someone to head up the Fairwind fleet. Hopefully that person will be at the April meeting ready to volunteer.

Just checked the center pond (3-28-04): completely open. North and South ponds are half open and most likely will be totally ice free by tomorrow night.

—Paul Olsen

OPEN WATER SIGHTED

Fred Ferris reports open water on the North pond as of March 31st 2004. Those of you who know Fred know he could not resist trying it out. As far as we know he is the first boat on the pond this year. Congratulations Fred.

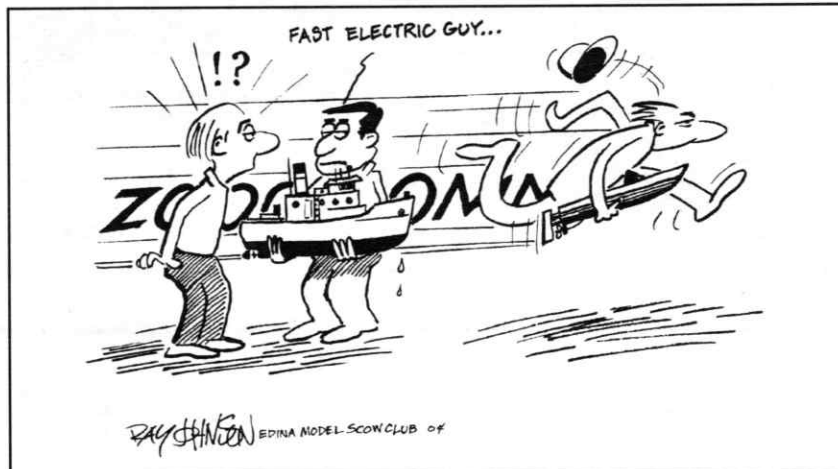
—Ed



IN MEMORY

Thomas Henry Watkins, age 78 formerly of Prior Lake. Preceded by wife Marcella (Mattaini) Watkins. Tom never met a stranger and always had a joke or story to tell. He never complained about anything and often referred to his life as "A Great Adventure".

—Minneapolis Star Tribune on 1/4/2004



IS TEKIN BACK?

They will be offering some of the original products, repackaging the best of the existing designs and developing the, already designed, next generation products. The G10 esc's and the BC112 series chargers will be the first products out the door. Other existing inventory will be available in limited quantities. A full product line consistent with Tekin's expertise will follow. Check out the website at: "www.teamtekin.com".

—George Pfeifer

Sail Tuning
Clinic

There will be a Sail Tuning Clinic at Centennial Lakes Garage Band Room

Saturday April 24th 9:00 a.m.

Bring your sailboats to this boat tuning and sailing methods clinic and get that yacht in shape for the coming season.

Tools and parts will be provided.

All members welcome.

EDINA MODEL YACHT CLUB SAILS TO SUCCESS

BY RONALD D. SCHROEDER

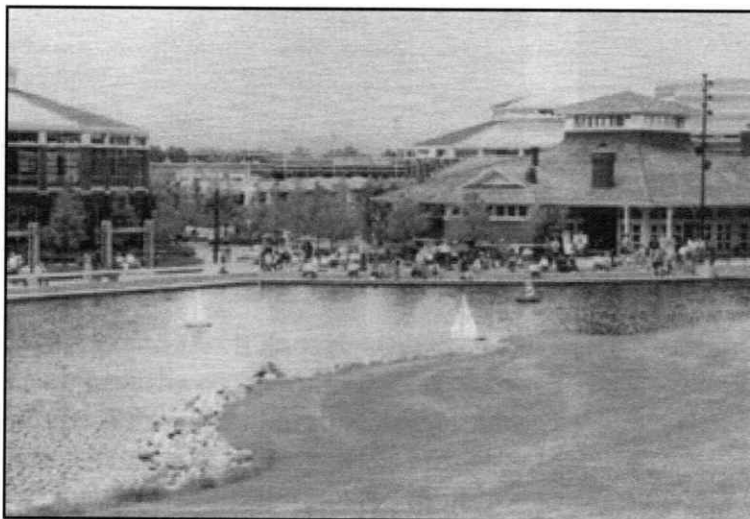
It stands to reason that Minnesota, the state whose license plates proclaim it the land of 10,000 lakes, is home to a fast-growing RC model sail and electric boat club.

But what sets apart this two-year-old club from others across the country is its unique origin and its successful alliance with a suburban Minneapolis City government. What's more, the club was started by an Edina, Minnesota City employee who wasn't even a RC model boat enthusiast.

The 50-member strong Edina Model Yacht Club (EMYC) was the brainchild of Edinborough Park manager Bill Bach. Bach's task in early 1991 was to find a recreational activity for the park's lake that serves as the centerpiece of the upscale Edinborough Park/Centennial Lakes shopping and residential complex.

"We wanted an activity that would match the lake's uniqueness," Bach says. "And those of us on the development team recommended that we look into RC boats."

Today EMYC is sanctioned by the American Model Yacht Association and is incorporated in Minnesota as a nonprofit organization. EMYC's credibility has given the city of Edina reason to recognize RC boating as a legitimate sport. Club members are usually found sailing a variety of models any evening or weekend that the ten-acre lake is free of ice and the weather is agreeable. In its organized races, the club competes with East Coast 12-meter and Marblehead class sailboats. EMYC's "Parade of Boats," held annually in early summer, gives members a chance to demonstrate and display boats and recruit potential members.



EMYC members sail Marblehead class boats. The shopping mall, left, extends behind Edinborough Park's Centrum building, right. The Centrum building serves as EMYC's base and meeting place.

The club as it exists today, flourishing in its environment of government cooperation, belies the fact that a great deal of research and organization went into its creation.

Early in 1991, Bach, working with a University of Minnesota intern, began the initial steps of evaluating the feasibility of developing an RC boat club for the lake in Edinborough Park. Bach liked the idea of RC boating for

the lake for three reasons: it provides a friendly use of the lake, it makes the lake a place of performance, and it creates an activity in which people can participate without getting their feet wet.

So Bach began the process of gathering information on RC boats and boaters. Bach turned to AMYA AND NAMBA as sources that could supply support information that would help him decide what to do. What Bach found was that, although there were Minnesotans who belonged to these organizations, no RC sail or electric boat club existed in the Twin Cities metropolitan area.

Hopeful in what he found, Bach decided to hold three informational meetings in August 1991. At the meetings, Bach distributed a survey asking about interest in an RC boat club. The meetings included discussions about the direction a club might take and about expectations of



This beautiful Marblehead class boat belongs to EMYC member Paul Olsen.

both city employees and RC boaters.

To spark interest, a variety of RC sail and electric boats were displayed at the informational meetings. Included in the display were RC sailboats that Bach had commissioned Minneapolis professional model maker Boucher-Lewis to design and build for Edinborough Park's rental fleet.

Bach compiled a list of local RC boaters who attended the informational meetings or heard about the sailing activity from friends. Invitations to a meeting in September 1991 were sent to the people on the list. At the September meeting and the monthly meetings held through 1991, EMYC set sail as RC boaters and city of Edina representatives began dealing with the formalities of creating a well-managed club.

Club members began writing bylaws and articles of incorporation. At the same time, EMYC applied to the city of Edina to be recognized as the city's official authority on RC boating.

At the beginning of 1992, Bach sent a second survey to the RC boaters who had shown an interest or participated in EMYC up to that time. The survey addressed RC boaters' perceptions of the club and gauged how involved members wished to become.

Member involvement was especially important because although the city of Edina initiated the club, Bach knew that EMYC's success depended on weaning the club of some city assistance. If indeed taking more ownership is a measure of success, EMYC proved itself at this past summer's "Parade of Boats."

"The organization of last summer's 'Parade of Boats' was impressive, especially the way club members tightened up the details. Coordinating radio frequencies, creating demonstration programs, and operating the different activities was really a sign of maturity," says Bach.

When Bach took the pulse of the club with the second survey, a few RC boaters complained that EMYC was too organized and decided not to join the club. Bach quickly points out, however, that all RC sail and electric boaters are welcome on the lake although EMYC members do have frequency priority.

That's where the benefits of having a city government on deck are realized. EMYC's recognized status gives club members exclusive rights to sailing times and events. The alliance with the city of Edina also gives EMYC credibility and strength. The association is mutually beneficial because EMYC gives the city a vehicle with which it can monitor the sport.

For example, gas RC boats aren't allowed on the one-quarter mile long lake because of its relative short length and because noise could be a problem for condominium owners just 50 yards away. If someone were to challenge the gas-boat ban, the city of Edina and EMYC, along with Bach, together become the entity to whom the grievance is aired.

As the meetings went into 1992 and EMYC members adopted bylaws, received incorporated status, elected officers, and established \$20 annual dues, a sense of real trust emerged.

"There was a good trust factor between the city of Edina and EMYC members. The members saw that we as a city had a genuine interest in RC boating and that we weren't leading them down the wrong path," Bach says.

EMYC members wholeheartedly agree that trust and cooperation are corner stones in the club's success.

"As an RC boater you get used to being kicked off lakes," says Paul Olsen, EMYC member. "But the city of Edina really wants us to be here. Sometimes I have to pinch myself to see if it's really happening."



Spectators enjoy a display of assorted RC boats in Edinborough Park's Centrum building, during the club's Parade of boats event.

The spirit of cooperation between EMYC and the city of Edina is apparent in their experience with the park's rental fleet. The RC sailboats, rented to the general public for \$3 per half hour, were sometimes returned damaged or broken and often required maintenance. Especially susceptible to breakage was the two-piece keel/ballast assembly. EMYC members designed a more rugged sailboat that would better withstand rough treatment by inexperienced renters. Unlike the sailboats in the old fleet, the new boats have ballast that's molded into the hull and employ a protection fin around the rudder.

The rental fleet represents an important part of EMYC's philosophy because it allows anyone to participate in the club. Model boat enthusiasts unable to afford the high start-up cost of RC sailing may begin with a rental boat at a relatively low cost. The rental fleet also typifies the interdependent relationships that help make EMYC successful. Some of the boats in the rental fleet are sponsored by retailers in the Edinborough Park/Centennial Lakes complex. A retailer buys the sailboat and makes a \$50 donation to EMYC. In return, EMYC members build the boat and affix the establishment's name on the sail. The city of Edina benefits too from the revenue that the rental fleet brings.

EMYC's affiliation with the city of Edina entitles the club to hold its meetings in a 600-square-foot room with plush furniture and a fireplace inside the Edinborough Park Centrum build-

ing. The Centrum building also is used during the club's "Parade of Boats" to house an information booth and various boat displays.

About ten feet from the Centrum building lies the lake. The lake's chief function is to collect rain runoff from the surrounding complex and streets so the water quality isn't good. That's why RC boating serves the lake so well. The lake's bottom is covered with a rubber liner that lies beneath a foot of sand. At its deepest, the lake is about nine feet. The launching area consists of over 150 feet of concrete retaining wall which includes built-in bleachers for spectators.

Air currents over the lake are an exaggeration of actual winds because of the buildings that surround it. The air tends to drop in and winds occasionally become gusty. Despite its relatively small size, the lake can become slightly rough. But this usually isn't a problem because Twin Cities winds are for the most part light.

But for the club itself, sailing has been smooth. EMYC members, city of Edina officials, Centennial Lakes merchants and Bach all consider the club an enormous success. For Bach, EMYC's achievements have been especially rewarding.

"My greatest satisfaction is seeing some thing that I initiated take off to a point where EMYC members have taken ownership. The members are controlling the club in concert with the city. We both think that we've got a great thing going. And so the ultimate satisfaction is that after only two years, EMYC has proven to be a win-win proposition," Bach says. "We both feel we've got the world by the tail."

—Spring 1994 issue of *U.S. Boat & Ship Modeler*.

"My greatest satisfaction is seeing some thing that I initiated take off to a point where EMYC members have taken ownership."

EDINA MODEL YACHT CLUB OFFICERS OVER THE FIRST FOURTEEN YEARS

We as members appreciate the effort these men and women have put forth in an attempt to make the Edina Model Yacht Club one the very best RC clubs in the country.

1991 John Bishop, Robert Lund, Ralph Peter and Steve Rusk served as an administrative committee.

1992 Steve Rusk served as Commodore and Robert Lund and Ralph Peter served as board members with John Bishop serving as Secretary/Treasurer.

1993 Steve Rusk was appointed as Commodore with Robert Lund and Ralph Peter serving as board members and John Bishop serving as Secretary/Treasurer.

1994 Steve Rusk was elected Commodore with Tony Johnson, Ralph Peter and Jim Smith serving as board members with Lincoln Shea serving as Secretary/Treasurer.

(Upon the resignation of L.Shea in February '94, the position of Sec./Treas. was assigned to): John Bishop.

1995 Dick Kjellberg was elected Commodore with Charles Bottemiller, Jeff McCabe and Paul Olsen serving as board members and Gary Phillips serving as Treasurer.

1996 Jeff McCabe was elected Commodore with Dave Bros, Doug Campbell, Mikio Kirihara and Dan Proulx serving as board members and Gary Phillips was appointed as Treasurer.

1997 Dan Proulx was elected Commodore with Dave Bros, Doug Campbell, George Pfeifer and Joe Hjelmstad serving as board members and Gary Phillips was appointed as Treasurer.

1998 George Pfeifer was elected Commodore with Kimberly Hershey, Bob Jones, Bob Larson and Irwin Stevenson serving as board members and Gary Phillips was appointed as Treasurer.

(Upon the resignation of B.Jones in January'98, the position of Vice Commodore was assigned to): John Dodson.

(Upon the resignation of J.Dodson in June'98, the position of Vice Commodore was assigned to): Dale Johnson.

1999 Dale Johnson was elected Commodore with Kirk Brust, Doug Campbell, Jeff McCabe, Doug Person and Alex Raupp serving as board members with Gary Phillips appointed as Treasurer.

2000 Dale Johnson was elected Commodore with Doug Campbell, Diego Gaston, Alex Raupp, Tim Smalley and Terry Spletstoeszer serving as board members and Gary Phillips was appointed as Treasurer.

2001 Andy Valentine was elected Commodore with Fred Ferris, Paul Olsen, Tim Smalley and Terry Spletstoeszer serving as board members and Gary Phillips was appointed as Treasurer.

2002 Michael Ross was elected Commodore with Gary Anderson, John Bishop and Doug Campbell (Secretary), Paul Olsen serving as board members and Gary Phillips was appointed as Treasurer.

2003 Michael Ross was elected Commodore with Gary Anderson, Doug Campbell, Neil Maldeis and Doug Person serving as board members and Gary Phillips was appointed as Treasurer.

2004 Paul Olsen was elected Commodore with Dave Bros, Dale Johnson, Keith Kaletta and Tim Smalley serving as board members with Mikio Kirihara appointed as Treasurer.

—Jim Smith

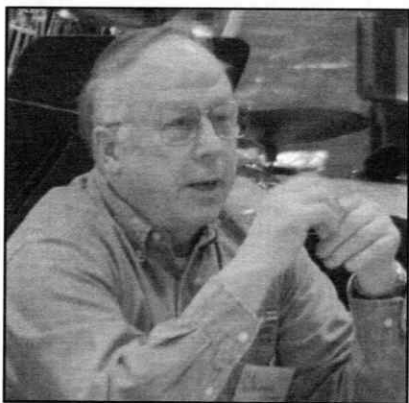
MEMBERSHIP BY YEAR

(1991, NA) (1992, NA) (1993, 47) (1994, 83)
(1995, 82) (1996, 85) (1997, 87) (1998, 86) (1999,
103) (2000, 140) (2001, 134) (2002, 102) (2003, 134).

AT THE MEMBERSHIP MEETING

MARCH 16, 2004

Commodore, Paul Olsen called the meeting to order at 7:00 PM.



Paul Olsen

Commodore asked new members and guests to introduce themselves. New member, Leon Lundquist did so and expressed an interest in submarines.

Commodore asked for comments on the proposed rules for

operating at the pond that he had distributed at the February meeting. There being no comments, Commodore said that he would have them signed by the park manager and copies prepared for distribution before the new sailing season begins.

Paul brought up the subject of the Parade of Boats preparation. He stated that there would be a strong emphasis on having as many boats in operation at all times as possible. He would like to see a mixed, steady flow of boats throughout the day. He asked for ideas for short displays of competition. Perhaps a sail race with running commentary, balloon bursting competition, etc.

Commodore had sign up sheet for Parade details...Frequency Control, Indoor Security, Builder's Table, etc.

John Bishop reiterated that the Parade is always held on the second Sunday of June and that the Centrum Building is reserved two years in advance for that purpose. John also mentioned that because of his unpredictable schedule, he would be happy to see someone step in to assist him and fill in for him, if necessary during the event.

Dave Bros asked for members to loan unfinished projects for display at the Builder's Table. Plastic, foam, plank on frame, planked, bread and butter...all are desired.

Ray Johnson stated that model construction seems overwhelming to many newcomers. The builder's display helps to dispel those fears.

Commodore asked Tim Smalley to continue to publicize the Parade through his contacts in the local media.

Fred Ferris asked if there was a firm date for the draining and refilling of the ponds. Best guess is shortly after ice-out and refill as soon as practicable.

Tony Johnson and Dave Bros will hold a sailboat tuning class, tentatively set for Saturday, April 24th at 9:00am They'll try for the Centrum Building (if it is not booked). Otherwise, the band room or garage will be used. This event will happen regardless of pond water levels.

Tom Weigel announced that he had club burgees available again for \$20. Tom donates \$5 from each sale to the club. Tom also has bumper and window stickers available.

John Bishop mentioned that the speaker at the April meeting will be Bill Bach. Bill was the original Centennial Lakes Park manager and was responsible



March 16, 2004. In the Band Room. 42 members in attendance.

in great part for the formation of the club. He will speak on that topic.

Tom Weigel stated that Fred Ferris had driven his ol' Suburban "boat box" to Marco Island, FL for the Laser East Coast Mid-Winter event, where Fred placed 4th in a field of 19. Terry Mackey, Bill Coppage and Dale Borgeson also attended but noted that they'd "rather not mention" where they finished.

Tim Smalley ventured to the Midwest Sub Committee gathering held in an indoor pool by the Indianapolis Admirals. About 50 enthusiasts attended.

Dale Johnson distributed the latest edition of the club roster. 101 members have joined or renewed.

Terry Mackey announced (again!) that he is still seeking someone to take up the reins as Fairwind fleet captain for the new year.

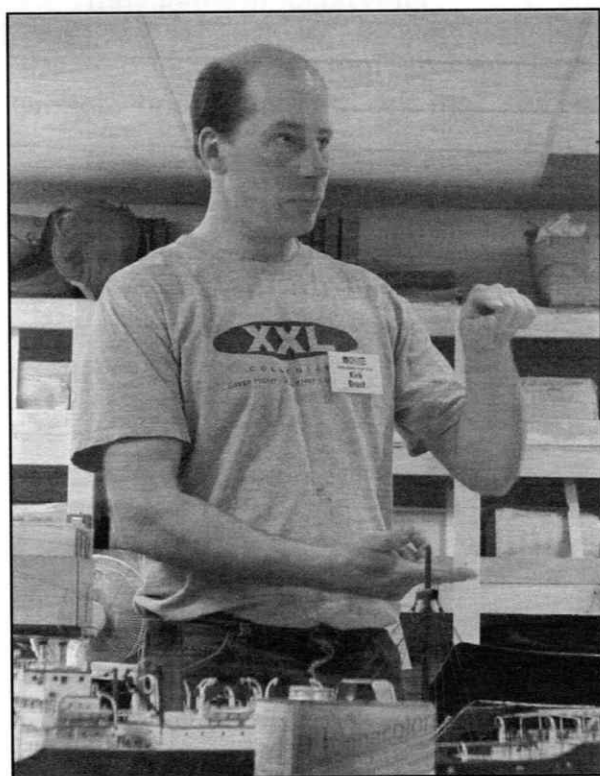
Meeting adjourned at 7:50pm.

Kirk Brust gave a thirty minute presentation on the use of washes and other techniques to give your project that "well used" look.

—Jim Smith



Kirk Brust shows his Nautilus model



Kirk Brust demonstrates some of his weathering techniques.



EDINA MODEL YACHT CLUB

Your contact for Yacht Club "Logo Gear"

is

Doug Person

I have three fantastic catalogues filled with clothing choices you can select to have embroidered by Team Mates, Egan.

Some clothing examples include: Polo and Chambrarty Denim shirts... Sweatshirts, Jackets, Caps, Vests, or your own shirt or jacket, etc. Embroidery options include our club logo and/or burgee with your name, boat name, number, etc.

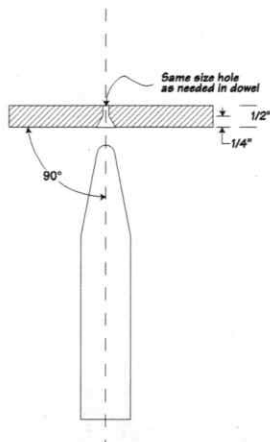
Typical costs range from about \$28.00 to \$33.00 (of course, price will depend upon the garment choice and amount of embroidery you choose)

Fly your colors...EMYC!!

BUILDER'S CORNER

SOLVING THE PROBLEM OF DRILLING A SMALL HOLE IN THE END OF A SMALL DOWEL

Take a small piece of 1/2-inch thick wood block. Start a larger, than the dowel, hole into the block about 1/2 way through. Now drill through with a drill the same size as needed in the dowel. The small hole must be in the center point of the larger hole. Now place the wood block over the dowel so that the dowel end fits into the larger hole. Hold the block 90° to dowel and hand drill the smaller hole into the dowel. The larger tapered hole will center the dowel to the smaller hole.



—Dave Bros

BOAT DISPLAY SHELVING

I have always been on the lookout for a nice complete shelf system to store a boat or two. I came across what I believe are the nicest shelves I've seen to date. They can be found at the Pottery Barn at the Galleria in Edina, 69th and France Avenue. The shelves come in three basic sizes: two foot, three foot, and four foot lengths. All are 10" in depth (distance from the wall) and 2 1/2" in thickness. They come in white, black or a stained wood finish. The white and black colors appear to have an enamel paint coating.

The three non-wall edges are finished in a crown molding type of trim and look to be of good quality. I took one off of the wall to see how they are supported. Large and strong 1/8" thick interlocking steel brackets mount at 16" on center locations for a secure and hidden support. If you secured the wall brackets through drywall and into studs, I wouldn't hesitate to store a 20 to 30 lb model boat with this system (I'm assuming about a 10 lb load per bracket). Note: this is only my guess and I don't know what the manufacturer recommends. The shelves cost \$49, \$59, and \$69 depending on the length.

Discounts are available for three or more. They're worth a look if you are interested in something that is strong, easy to mount, and has a good prefinished appearance.

—John Bishop

SPECIAL THANKS

To all the members that contributed to this issue of the Sail & Scale. Without you this publication would be nothing.

John Bishop, Dave Bros, Fred Ferris, Ray Johnson, Paul Olsen, Doug Person, George Pfeifer, Alex Raupp, Jim Smith.

— NOTICE — END OF ROAD AHEAD

This issue will be the last one for members who have not renewed their 2004 membership.

— Farewell until we meet again. —

WOODBURY RAILROAD FLEAMARKET

Saturday April 24, 2004

10:15 a.m. to 3:00 p.m.

Woodbury High School, Woodbury MN.

Adults \$4.00 • Children under 12 Free

ANTIQUE TOY, DOLL & ADVERTISING SHOW

Sunday May 2, 2004

9:00 a.m. to 3:30 p.m.

Progress Center, MN State Fair Grounds

Enter at Snelling/Hoyt Avenue Gate.

Adults \$5.00 • Children Free

CLUB SHIRTS HATS ETC.

Contact:

Douglas Person

Cub Burgees and Stickers

Contact:

Tom Weigel



EDINA MODEL YACHT CLUB

**Centennial Lakes Centrum
7499 France Avenue South
Edina, Minnesota 55435
www.emyc.org**

Edina
Recycles



U.S. POSTAGE
0037:
H METER 700105

A 04



3543B+2B44 03



APRIL MEETING

**TUESDAY, APRIL 20, 2004 7:00 P.M.
CENTENNIAL LAKES GARAGE BAND ROOM**

Presentation on Club History

At the April meeting our special speaker will be Bill Bach. He is the man responsible for the Club being formed.

Special Interest Contacts:

Membership:

Dale Johnson [redacted]

Scale Boating:

Tim Smalley [redacted]

Sail Boating:

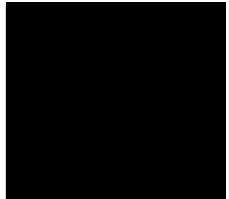
Tony Johnson [redacted]

Fast Electric:

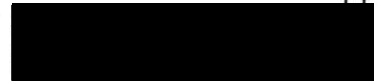
Andy Valentine [redacted]

2004 Board Members

Commodore: Paul Olsen
Vice Commodore: Tim Smalley
Vice Commodore: Dave Bros
Vice Commodore: Dale Johnson
Vice Commodore: Keith Kaletta



Newsletter Editors: Dale Johnson & Alex Raupp



Please send articles by email to:



Deadline for articles to be considered for the May publication will be Monday April 26, 2004