

# EDINA MODEL YACHT CLUB

## SAIL & SCALE NEWSLETTER

SEPTEMBER 2008

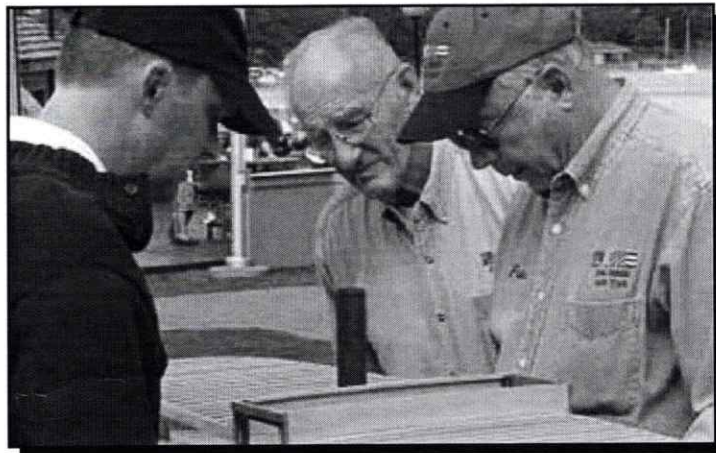
VOLUME 17, NUMBER 9

### EMYC AT CLASSIC BOAT SHOW

A number of EMYC members took their best boats to Excelsior's Maynard's Restaurant on lake Minnetonka to participate in the annual Antique and Classic Boat Show. There was a huge crowd attending because of other fall events in Excelsior and other nearby communities.

Tents and tables were available for the model boat display, making for a comfortable and enjoyable day. Our thanks to Dick Mickelson for the invitation to participate in this popular event.

Thanks to all members who participated and showed their scale versions of the classic "trailer queens" and floating boats at the show.



#### SCHEDULE OF EVENTS:

Dry Dock Party	Centrum Building	November 22, 2008
Swap Meet at Nov Meeting	Band Room/Garage	November 18, 2008
Last two meetings of 2008	Band Room	Tues., October 20 and Tues., November 18, 2008
Daylight Savings Time Ends	Dark one hour earlier - sail with lights!	Sunday, November 2, 2008



## COMMODORE'S CORNER

## "BIG WATER" GICHIGAMI



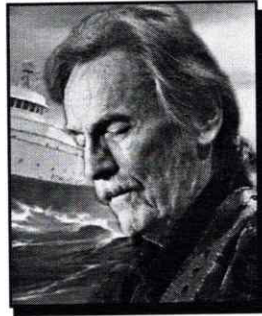
By Al Bickford

### Antiques and Classics

I'd like to thank the following intrepid club members for recently doing an excellent job of representing our club: Ray Meifert, Kevin Waldo, Ron Bongard, Paul Olsen, and Dick Walker. Each brought a load of boats to the Excelsior Antique and Classic Boat Show. We ended up with a display of about 15 boats. They ranged from sail to steam and everything in-between. We set up four tables and no sooner had we put out our models than people and questions were on their way. We estimated that more folks stopped by at this event than were at this year's Parade of Boats. The day was cool and clear, and the real classics were beauties. Some on trailers, many in the water. Mahogany everywhere. A scratch-builder's dream. Everything from tiny fourteen-footers to a real monster at 54 feet. Hopefully we'll be asked back next year - and we'll be more prepared for the event with our banners, info pamphlets, etc. All told though, a great time for all of us.

Thanks again guys,

*Smooth sailing - Al Bickford*

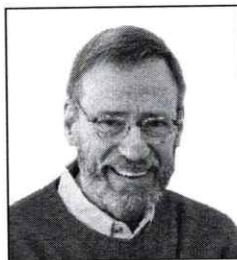


By Mack Enauw

Lake Superior is the largest freshwater lake in the world by surface area. Lake Baikal in Russia is larger by volume, as is Lake Tanganyika. The Caspian Sea, while larger than Lake Superior in both surface area and volume, is saline; though presently isolated, historically it has been repeatedly connected to and isolated from the Mediterranean via the Black Sea.

Lake Superior has a surface area of 31,820 square miles (82,413 km<sup>2</sup>)—which is larger than South Carolina. It has a maximum length of 350 miles (563 km) and maximum breadth of 160 miles (257 km). Its average depth is 482 feet (147 m) with a maximum depth of 1,332 feet (406 m). Lake Superior contains 2,900 cubic miles (12,100 km<sup>3</sup>) of water. There is enough water in Lake Superior to cover the entire land mass of North and South America with a foot (30 cm) of water. The shoreline of the lake stretches 2,726 miles (4,387 km) (including islands). The lake's elevation is 600 feet (183 m) above sea level. American limnologist J. Val Klump was the first person to reach the lowest depth of Lake Superior on July 30, 1985, as part of a scientific expedition, which, at 733 feet (223 m) below sea level, is the lowest spot on the North American continent.

Annual storms on Lake Superior regularly record wave heights of over 20 feet (6 m). Waves well over 30 feet (9 m) have been recorded.



**EDINA MODEL YACHT CLUB**  
Your contact for "Logo Gear" is  
**Doug Person**

I have three fantastic catalogues filled with clothing choices you can select to have embroidered by Team Mates, Egan.

Embroidery options include our club logo and/or burgee with your name, boat name, number, etc.

***Fly your colors...EMYC!!***



## BUILDER'S CORNER

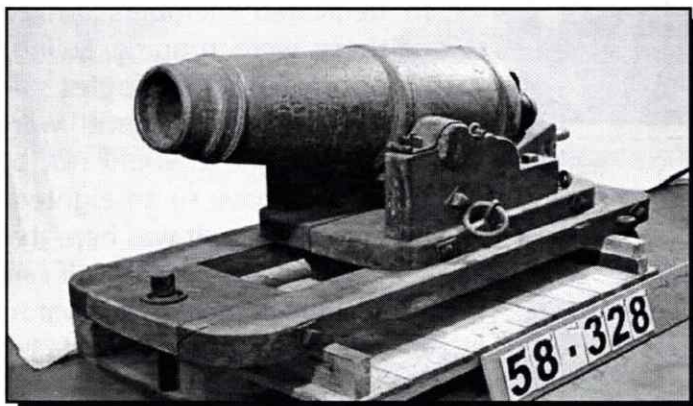
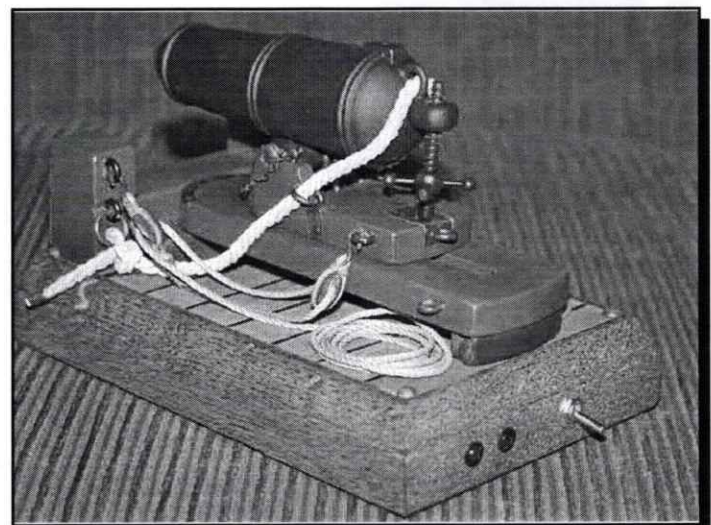
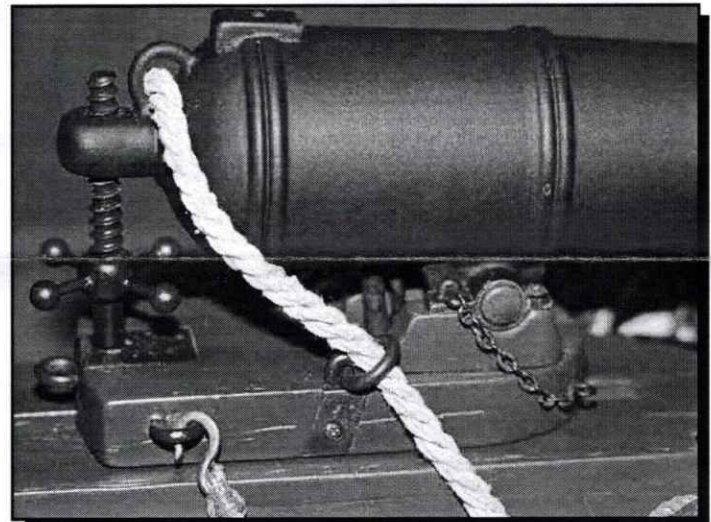
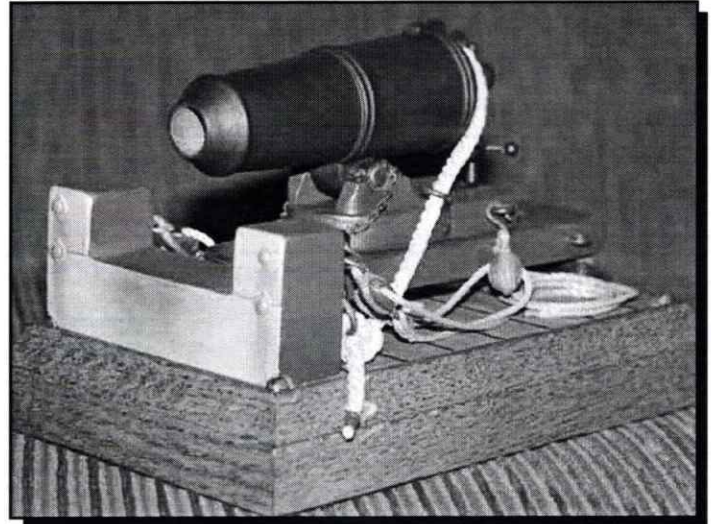
By Gray Paschott

The carronade was a short smoothbore, cast iron cannon, developed for the Royal Navy by the Carron Company, an ironworks in Falkirk, Scotland, UK. It was used from the 1770s to the 1860s.

The carronade was designed as a short-range naval weapon with a low muzzle velocity, intended to create many more of the deadly wooden splinters when hitting the structure of an enemy vessel, leading to its nickname, the smasher. However, the small powder charge of the carronade was only able to project a heavy cannonball over a relatively limited distance. They were also deadly firing grape shot.

Carronades were manufactured in the usual naval gun calibres of 12, 18, 24, 32 and 42 pounders. The carronade was typically mounted on a sliding, rather than wheeled, gun carriage, and elevation was achieved with a turnscrew rather than the quoin (wooden wedges) usual for naval guns. In addition, a carronade was usually mounted on a lug underneath the barrel, rather than the usual trunnions to either side.

The scratch built model pictured represents a 32-pound carronade circa 1806. The scale is 1/12, giving it a 1/2-inch bore, scaled from the slightly over 6" prototype bore. The model carronade fires a powder charge triggered by a remote R/C switch.





# Golf Carts and Sailing

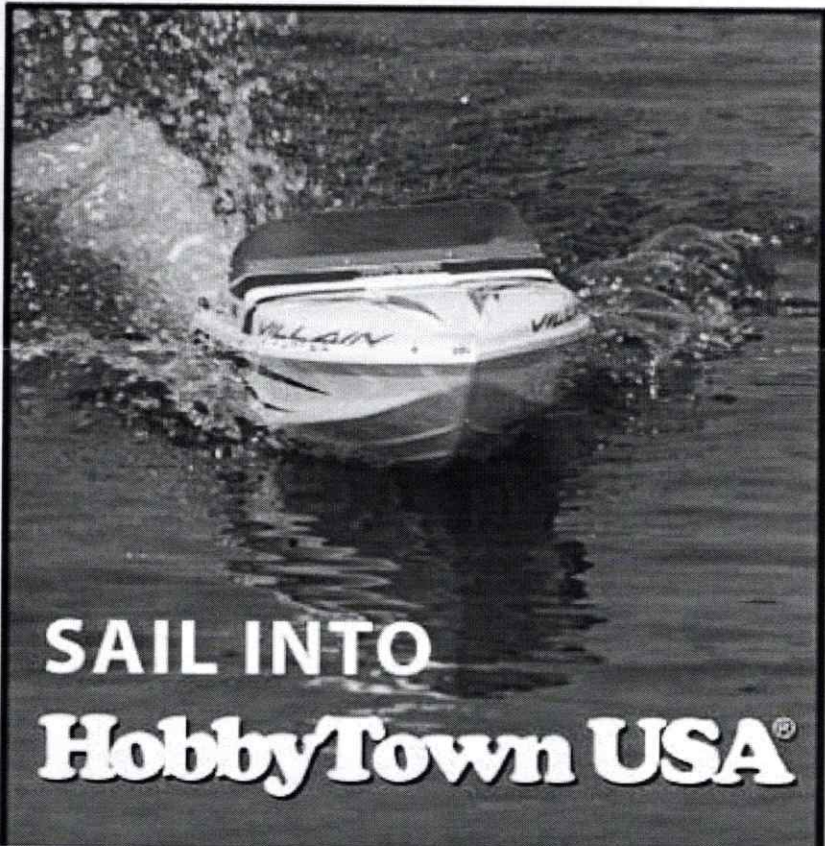
By Vern Grimes

In Florida, there is a community of over 65,000 just 60 miles northwest of Orlando called "The Villages". And here you will find a golf cart based society of "over-55's" using golf carts to transport themselves and guests to about all activities except

maybe ski jumping and ice fishing. In March, 2008, our hosts Eric and Barb Erickson, used a four place golf cart to take us to a polo match. There are hundreds of village sanctioned clubs of ten or more people, scores of golf courses including some of championship quality, many swimming pools, shuffle board, bocce ball and tennis courts, an R/C flying club field, and dozens of lakes and ponds.

At Lake Miramar, located near one of the community centers, The Village R/C Model Boat Club sails each Monday and Wednesday from 10 AM to 1 PM. The club meets the second Monday of each month at 7PM in a room provided by The Villages. The meeting is open to all Village residents. Both sail and electric are welcome. As they say in their website "Learn to enjoy sailing without the high cost of dock space!" Dues are \$12 per year. Lake Miramar is similar in size to our Centennial Lakes and has a floating launch dock and many permanently anchored buoys for the sailboats.

While visiting this idyllic site on a relatively blustery and unusually chilly Monday morning, a half-dozen or so dedicated members arrived. All of these were running Solings. Commodore Thomas Engle said they had 49 members and were growing, and that it would not be uncommon to have six to eighteen Soling's on the lake. It was here that I saw the unique use of the golf cart. Model boaters being the innovators they are had removed the golf club racks and installed covered R/C sail-



**SAIL INTO  
HobbyTown USA®**

Quality Service · Great Prices

**\$5 OFF**  
purchase of \$25

Minnetonka, MN - 11319 Hwy 7 · (952) 931-2226  
Brooklyn Park, MN - 7916 Brooklyn Blvd · (763) 424-6052  
Hermantown, MN - 4879 Miller Truck Hwy · (218) 723-7114

Take \$5 off your next purchase of \$25 or more. Not valid with any other offers, coupons or on the sale of gift cards. Limit one per customer. Present coupon to receive discount. Valid at the Minnetonka, Hermantown, & Brooklyn Park MN HobbyTown USA® store locations only.

[www.hobbytown.com](http://www.hobbytown.com)



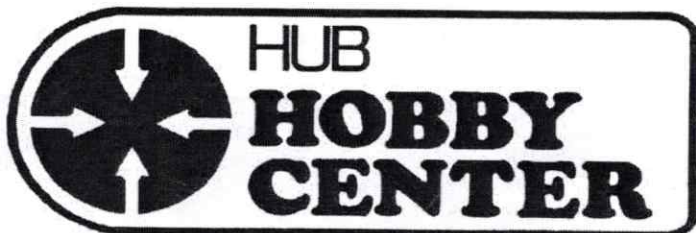
boat transporters. As the golf carts could be parked near the waters edge, why bring a lawn chair when after launching you could run your boat while sitting in the cart.

If you are ever in The Villages, stop by and see a great bunch of sailors having fun in the sun. And bring a boat.



**RICHFIELD**  
**612-866-9575**

**LITTLE CANADA**  
**651-490-1675**



OPEN...MON-FRI, 10:00-9:00...SAT, 9:30-5:30...SUN, 12:00-5:00

**SHOW YOUR EMYC CLUB CARD AND RECEIVE  
10% OFF ON ALL NON-DISCOUNTED ITEMS !**

**\*Richfield\***  
6410 Penn Ave. S.  
Richfield, MN 55423  
(1 blk S of LUNDS)



**\*Little Canada\***  
82 Minnesota Ave.  
Little Canada, Mn 55117  
(Hwy 36 & Rice St.)

## August Meeting Minutes

Both Don and I, Secretary and Editor, missed the last meeting and did not get any meeting notes or pictures. Our apologies.

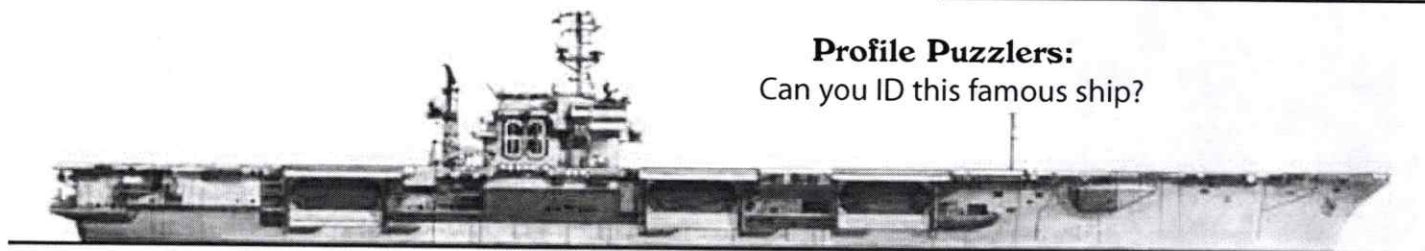
Generally, attendance on sailing nights at the pond has been excellent, and monthly meeting attendance has been a very respectable thirty-ish.

Al has been keeping the meetings crisp and relatively brief, allowing everyone to get out and sail rather than sit in the band room.

See you at the September meeting.

## Profile Puzzlers:

Can you ID this famous ship?

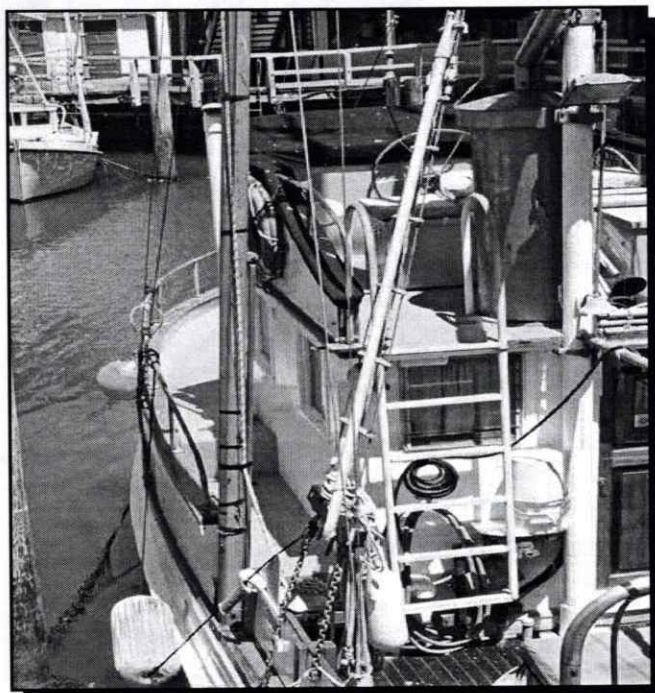




I'm sittin' on the dock of the bay,  
Watching the tide roll away...



Pictures from Fisherman's Wharf in San Francisco, provided by John Bishop.  
Title lyrics from Otis Redding. John's color photos are beautiful - these black and white renditions look great, too. Thank you, John.



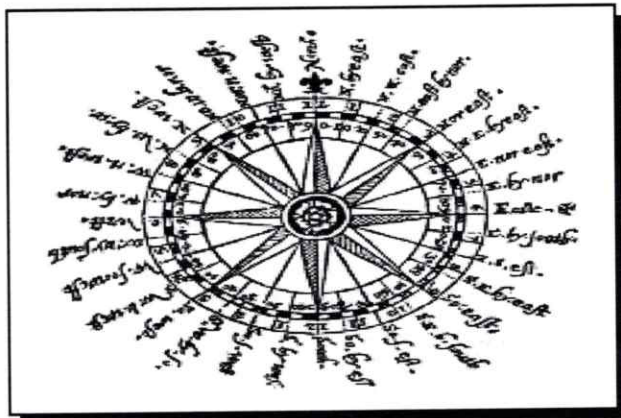
### Dumas #1224 Thompson Trawler

The kit features an ABS hull, deck and cabin, and might be a good start for re-creating one of the San Francisco fishing trawlers in John's pictures. Some minor superstructure style enhancement would make this a beautiful build.

Scale: 1/20    Length: 36"    Beam: 13"  
Price: \$176.00    Fitting Set # 1224F: \$86.00



## NAUTICAL KNOW-IT-ALL



**T**his month, it's "Boxing the Compass." Jim, you won't find this answer on Google or in Wikipedia!

Now, where were we? Oh, yeah, boxing the compass. Can you figure out where we steered our boat? The first thing learned by even the youngest boys on old sailing ships was the recitation, in proper order, of the points on the compass.

You're 4 hours out of port and have maintained a heading of NE at a steady 8 knots. The con orders a new course, East by North (EbN), for the final two hours of your watch, maintaining current speed.

Your watch ends and you get some sleep. Returning to the helm 16 hours later, you find that the course was changed immediately when you last left the helm. The new course ordered was South South West (SSW) and speed was reduced to a steady 6 knots.

Where are you? What approximate direction and distance are you from your original port? Ignore current and wind.

Prize for this month's correct answer is a neat calculator from AxMan!

(Last month's difficult and multipart question about the world's largest submarines was correctly answered by Jim Smith. That's two in a row for Jim - he's racking up the prizes. This one is a \$10 gift certificate to Hub Hobby.

Here are Jim's answers about the gigantic soviet subs, their designations, names, etc.:

Sub designation: Typhoon Class (48 - 50,000 tons)

Number built: Six

Location: Russian shipyard in Severodvinsk

Numbers and names: - TK-208, TK-202, Tk-12, TK-13, TK-17, TK-20; Arhangelsk, Simbirsk, Severstal, Dmitry Donskoi (only 4 named)

## SPECIAL THANKS...

To all the members that contributed to this issue of the Sail & Scale: Al Bickford, Dale Johnson, Mack Enauw, Gray Paschott, John Bishop and Vern Grimes.

## Items For Sale:

**Fairwind sailboat** Price negotiable.  
Brian - [REDACTED]

**Spektrum DX6i** Four JRPA635 Throttle Ratchets, brand new, \$5.00 each.

**Laser sailboat** \$450.00  
Includes three sails, boat stand and carrying bag.

**Hitec FM** dual range transmitter.  
Two receivers. Reason for sale - bought a Spektrum. \$65.00.  
3 above by John D. - [REDACTED]

## Wanted: 2009 Sail & Scale Editor

Fellow EMYC members, please consider taking on the role of editor of the newsletter for 2009. There are two more issues scheduled for this year, and you can start to get familiar with the process by helping a bit with those issues if you are interested.

Please give me a call if you might be interested or if you have any questions.

Thank you, - Dan Lewandowski

## CLUB SHIRTS HATS ETC.

### Contact:

Douglas Person [REDACTED]

## Club Burgees and Stickers

### Contact:

Mickey Kirihara [REDACTED]



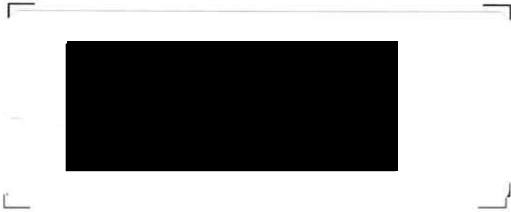


**EDINA MODEL YACHT CLUB**  
 Centennial Lakes Centrum  
 7499 France Avenue South  
 Edina, Minnesota 55435  
 www.emyc.org



Hasler

016H26512544  
**\$00.420**  
 09/12/2008  
 Mailed From 55424  
 US POSTAGE



## SEPTEMBER MEETING

TUESDAY, SEPTEMBER 16, 2008 7:00 P.M.  
 CENTENNIAL LAKES GARAGE BAND ROOM

### AGENDA:

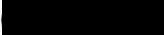
- Show'n'Tell
- Bring nautical treats!

### Special Interest Contacts:

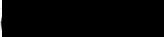
#### Membership:

Ray Meifert  rmeifert@emyc.org

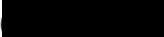
#### Scale Boating

Tim Smalley  tsmalley@emyc.org


#### Sail Boating:

Tony Johnson  tjohnson@emyc.org

#### Fast Electric:

Dan Proulx  dproulx@emyc.org

## 2008 Board Members

**Commodore:** Al Bickford   
**Vice Commodore:** Ben Radenbaugh   
**Vice Commodore:** Vern Grimes   
**Vice Commodore:** Paul Olsen   
**Vice Commodore:** Don Pearson   
**Secretary:** Don Westley  
**Treasurer:** Mickey Kirihara

The **Edina Model Yacht Club Sail & Scale Newsletter** is published monthly except for December.

**Newsletter Editor:** Dan Lewandowski  
  
 dlewandowski@emyc.org  
**Webmaster:** Dale Johnson  
 djohnson@emyc.org

Please send articles by email to:  
 dlewandowski@emyc.org

Deadline for articles to be considered for the October publication will be Friday, Oct. 3, 2008.