

EDINA MODEL YACHT CLUB

SAIL & SCALE NEWSLETTER

NOVEMBER 2012

VOLUME 21, NUMBER 11

2012 Jim McFadden Model Boat Show

By John Bertelsen

The 2012 Jim McFadden Model Boat Show put on by the Nautical Model Ship Builders Society, St. Paul, contained a

very interesting variety of ship/boat displays. Smaller than our own Parade of Boats, both in the number of vessels and the size of the display area, the show was anchored by a magnificent meter size model of a Swedish War Ship with incredible riggings bow to stern and rows of statues lining the bow at one end of the display, and our own Paul (continued on page 4)



Cutaway replica of the "Edna G". The real boat is a popular attraction in Two Harbors, Minn.

SCHEDULE OF EVENTS:

November 20, Tuesday7:00 p.m.- 9:00 p.m.Annual Swap Meet Meeting
January 15, 2013 Tuesday7:00 p.m.-9:00 p.mMembership Meeting

COMMODORE'S CORNER



By Wayne Snyder

Summer's gone its fled away, we now look forward to next spring's first warm day. Last month's meet-

ing was one where we as a community of like minded modelers made decisions about our club and came to a consensus about the news letter and the amount for dues. As with all such decisions there was compromise. The decision to raise the membership amount to \$30/member, \$40/family and \$25 for children was the final decision. Because of declining membership these increases are necessary to keep the club solvent. I have witnessed the same solution in other organizations I am involved with. This does not say that things cannot change for the better in the future, an increase in membership or a way to reduce the cost of printing the newsletter can benefit us. The \$5 for the Dry Dock party was needed to get us through this last event of the season and remain solvent. Our newsletter is one of the best in the country and we need to strive to keep it at its current state. Perhaps someone knows a printer who does small printing projects would take on our needs, if so let me or Todd know. Have a great building season and Happy Holidays to all.

Wayne Snyder -Commodore EMYC

RICHFIELD
612-866-9575

LITTLE CANADA
651-490-1675



OPEN...MON-FRI, 10:00-9:00...SAT, 9:30-5:30...SUN, 12:00-5:00

SHOW YOUR EMYC CLUB CARD AND RECEIVE
10% OFF ON ALL NON-DISCOUNTED ITEMS!

Richfield
6416 Penn Ave. S.
Richfield, Mn 55423
(1 blk S of LUNDS)



Little Canada
82 Minnesota Ave.
Little Canada, Mn 55117
(Hwy 36 & Rice St.)

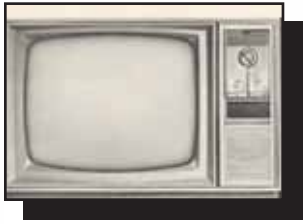
We will do whatever it takes to keep you on the water.



CONTROL FREAKS RC

952-473-0271 Long Lake www.ControlFreaksRC.com

Special Thanks...To members that contributed to this issue: John Bertlesen, Dale Johnson & Wayne Snyder.



NAUTICAL KNOW-IT-ALL - McHALE'S NAVY
TELEVISION SHOW QUIZ BY P.T. & B.W. SITCOM

This month marks the 50th anniversary of the premier of McHale's Navy, a comedy about the crew on a P.T. Boat during World War II. Take this quiz to see how well you remember this show

1. "McHale's Navy" was about a group of American sailors fighting for the U.S. Navy during World War II. What theatre of conflict did "McHale's Navy" operate during their first three years the show was on the air?
 A. North Atlantic B. Pacific C. North Africa D. Southeast Asia
2. At the beginning of the final season of "McHale's Navy" the crew was transferred to the European theatre of conflict. What was the name of the small Italian village that McHale and his men called home?
 A. Florence B. Sardinia C. Tunis D. Voltafiore
3. Ernest Borgnine starred as Lieutenant Commander McHale during the entire run of "McHale's Navy". What was Lieutenant Commander McHale's first name?
 A. Kevin B. Charles C. Ernest D. Quinton
4. Ensign Charles Parker, played by Tim Conway, was actually replacing another ensign on "McHale's Navy". Who was the unseen, but named, ensign that Ensign Parker replaced during the first episode?
 A. Captain Blye B. Ensign Pulver C. Master Seaman Hastings D. Ensign Farthingay
5. One of the regular cast members of "McHale's Navy" was played by Gavin MacLeod. Gavin later went on to fame as Murray Slaughter on the "Mary Tyler Moore Show". What was his character's full name on "McHale's Navy"?
 A. Joseph "Happy" Haines B. John "Shoeless" Jackson
 C. James "Sailor Boy" Johnson D. Jimmy "Superstar" Olsen
6. What was the nickname Lieutenant Commander McHale and his men had for Captain Binghamton?
 A. Old Leadbottom B. The Big Kahuna C. Old Ironsides D. Grumpy Old Man
7. Captain Binghamton had an aide for a majority of the episodes of "McHale's Navy". What was the name of Captain Binghamton's aide?
 A. Lieutenant Commander Quinton McHale B. Lieutenant Bobbie McKnight
 C. Seaman Adam Graves D. Lieutenant Elroy Carpenter
8. Lieutenant Commander McHale was the skipper of a U.S. Navy Torpedo Boat on "McHale's Navy". What was the number assigned to Commander McHale's boat?
 A. PT109 B. USN77 C. PT73 D. USN1234
9. Lieutenant Commander McHale and his crew had their very own cook, whom Captain Binghamton knew nothing about. Their cook was a Japanese sailor who "went over the hill" and was liberated by McHale. What was this Japanese sailor's name?
 A. Fuji Kobajji B. Tanaka Tiro C. Hito Hiromoto D. Yodi Toyoda
10. What was the name of the dramatic TV show that served as the pilot episode to "McHale's Navy"?
 A. The Navy Strikes Back B. Seven Against the Sea C. McHale's Marauders
11. What type of PT boat was used for the TV series?
 A. 72 foot Vosper Motor Patrol Boat B. 81 foot Higgins Patrol Torpedo Boat
 C. 77 foot Elco Motor Torpedo Boat D. 72 foot Huckins Motor Torpedo Boat
12. Who was the previous owner of the PT boat that was used in the TV series?
 A. Charlton Heston B. Humphrey Bogart C. Howard Hughes

Model Boat Show (cont.)



Olsen's stunning schooner at the other end, both ships causing a sharp intake of breath by many of the attendees. The displays in between these two were highlighted by two tugs under glass: Minnesota's own Edna G., the real item on display in Two Harbors, and the Coast Guard Tug Ludington that took part in the WWII Normandy invasion. The Edna G. featured a multi-level cut away of the engine compartment.

There were also several dioramas including a sunken submarine with air craft carrier passing overhead, the sunken warship Vasa, and the Battle of Leyte Gulf/ Samer Island. One of the most unusual craft displays was the Bull-Of-The-Woods logging scow depicted in it fully operation condition and the present day condition in 6 feet of water in Burntside Lake near Ely. Indeed this was so unusual that it has garnered a boat show award for this very reason.



Photos By John Bertelsen

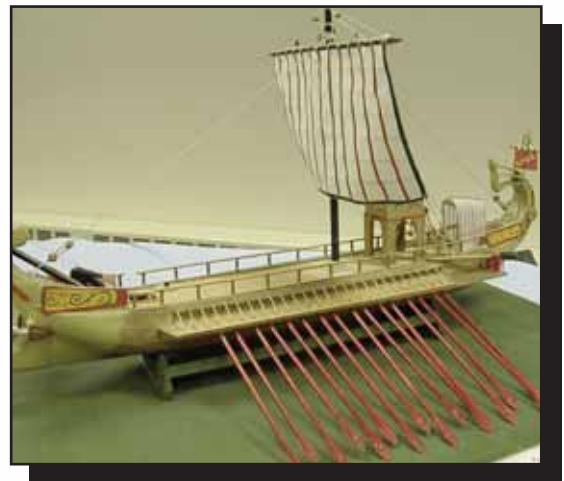
Model Boat Show (cont.)



One of my personal favorites was a display of gaming pieces in the form of miniature ships. These were from 2 inches to less in overall length, and the modeler explained they come standard for gaming with masts and sails cast as one piece. To these he adds the rigging and paint, the painting being done with #20/0 paint brush under a microscope!

Popular were galleons of the Columbus discovering America type, a variety of ancient Roman warships of the Ben Hur movie style, and several Revelle models of battleships and schooners. Of the latter, one Cutty Sark was an early 1990's model that had been sitting in the closet and only recently assembled. Come to think of it, I have two large scale motorcycle models from several decades ago in the closet waiting for assembly.

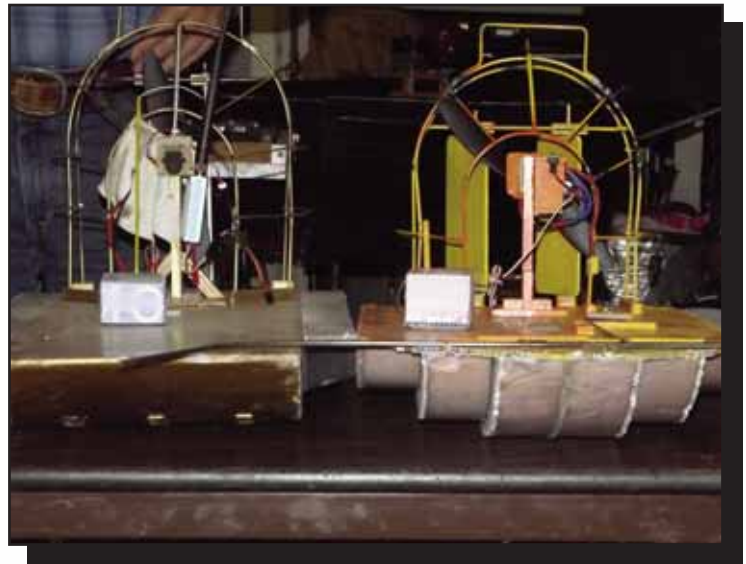
All in all it was an interesting if modest show. Prior to joining EMYC this year I had little exposure to model boats/ships, and I find it easy to admire the skill and patience it takes to assemble these craft whether they are meant to be actively sailed or static displayed. - *John Bertelsen*



Photos By John Bertelsen

AT THE OCTOBER MEETING By Todd Moen

Mike Burk was the special guest at our October meeting. His presentation of building and racing airboats was well received. I think his airboats would be a welcome addition to our Parade Of Boats event.



ANSWERS TO OCTOBER'S NAUTICAL KNOW-IT-ALL QUESTIONS

1. Friday has always been considered an unlucky day to launch a voyage.
2. Clergymen are bad luck on board, they are dressed in black and perform funeral services..
3. Penguins are considered to be unlucky to have near a ship...does this have anything to do with the proximity of ice?
4. Sailors never will speak of pigs on board. According to legend, pigs can see the wind. Speaking of this animal can cause the wind to blow unfavorably. Other animal superstitions include never killing an albatross or gull (they contain the souls of dead sailors). And of course, sharks following a vessel is an ill-omen since they are believed to be able to sense death.
5. Tattoos are said to prevent sailors from drifting away if they should fall overboard. Tattooing HOLD FAST on one's knuckles prevented a sailor from falling from aloft. In the days when whipping was used in the navy for punishment, sailors would have the Virgin Mary or Jesus tattooed on their back. They believed this would keep the punisher from lashing too hard.
6. Sailors whistling on deck, it is believed, can raise unfavorable winds. If a sailor should whistle by mistake, he or she must spit into the prevailing wind.
7. Sailors must never let the ship's crystal ware ring. Unintentional bells on board is an omen of death. If the crystal rings and no one stops it, then a sailor will drown somewhere in the world. I'm assuming this originated in the officers' mess, since common swabbies don't usually drink out of crystal glasses.
8. Back in pagan days, it was wise to appease the water spirits with an offering of wine. It is through this practice that we get the tradition of breaking a bottle of champagne on the hull of newly christened ships.
9. Witches would sell magic hawsers to sailors. These hawsers were believed to summon the wind.
10. Sailors seem to be leery of things left handed. Stepping aboard a boat with your left foot first is a sure sign of future bad luck. Scottish fishermen believed a left boot is unlucky, but a found right boot should be nailed to the mast to bring good fortune.

CITY EMPLOYEES SAVE ELDERLY MAN FROM CENTENNIAL LAKE

By Ryan Gauthier from The Edina Patch

Tom Shirley and Doug May dove into the water to rescue a 96-year-old man who had fallen in while fishing. The man was separated from a large group in the park and headed toward the lake with a fishing pole in tow. Just north of Hughes Pavilion, the man climbed down onto the lowest step near the water, lost his balance and fell into the lake.

Park Manager Tom Shirley noticed a large group gather near the panicked man, then rushed to see what was going on. Attempts to direct the man back to the side of the lake were unsuccessful as neither the man nor the group he was with spoke much English.

Shirley and Park Maintenance Supervisor May both leapt into the lake to rescue the man, lifting him back to the landing and calling 9-1-1 for additional assistance. Edina Fire Department paramedics arrived a short time later and helped the man.

Fire Chief Marty Scheerer recognized the life-saving efforts of Shirley and May at the Oct. 16 City Council meeting. He pre-

sented the two with Certificates of Merit, the highest possible award given to non-employees of the Edina Fire Department for saving someone's life or property.

"[They] truly are hometown heroes," Scheerer said. "Not only did they rescue this guy, but they continued to work and went to meetings with wet clothes on after." - *Used by permission from Ryan Gauthier*



SAILBOAT FOR SALE

Soling 1 Meter, Ready To Sail
 Built On The Club Alignment Fixture.
 Includes A Futaba Transmitter
 Channel 64.
 Contact Bill Igoe 952-944-7981

LOOKING FOR IDEAS

This issue of the Sail & Scale wraps up my fourth year as the newsletter editor. I need new ideas, progress photos of your building projects and feature articles for the new year. Bill Hamelink has given me a fantastic article for the January edition but more are needed for the winter months.

- Todd Moen



EDINA MODEL YACHT CLUB

Centennial Lakes
Hughes Pavilion
7499 France Avenue South
Edina, Minnesota 55435
www.emyc.org



NOVEMBER MEETING

TUESDAY, NOVEMBER 20, 2012 7:00 P.M.
CENTENNIAL LAKES GARAGE BAND ROOM

AGENDA:

-Annual Swap Meet

Special Interest Contacts:

Scale Boating:

To Be Determined (Anybody Interested?)

Sail Boating:

Tony Johnson (952) 470-8818 tjohnson@emyc.org

Fast Electric:

Dan Proulx (763) 551-4953 dproulx@emyc.org

2012 Board Members

Commodore: Wayne Snyder (952) 831-7434
Vice Commodore: Bill Lundholm (952) 832-9267
Vice Commodore: Bill Koester(714) 273-0549
Vice Commodore: Dick Dahlquist (651) 459-8377
Vice Commodore: Robert McDonald
Secretary: To Be Determined
Treasurer: Larry Wheeler (612)-926-5295

The **Edina Model Yacht Club Sail & Scale Newsletter** is published monthly except for December.

Newsletter Editor: Todd Moen
(612)729-7690
jmoen@pro-ns.net

Webmaster: Dale Johnson
djohnson@emyc.org

Please send articles by email to:
jmoen@pro-ns.net

Deadline for articles to be considered for the
January publication will be
Wednesday December 29,2012

