

EDINA MODEL YACHT CLUB

SAIL & SCALE

NEWSLETTER

May 2023 Membership Meeting, News and Other Things

Boy-o-boy, it seems like we kicked off the season with the spring coffee and pastries about a million years ago! That was April 29th. We had right at about 30 people and we had a great time. Boats were sold and purchased and lots of boats were on the water. It was a great day! We have now done the spring event at both ends of the scale, catered in and on our own donuts, pastries and coffee. Both ways were enjoyed by the participants. We are thinking of a different way of handling food and what types for next year. If you have suggestions send me a note or tell Terry when you see her.

South Dakota David Geovaninni sends this report in:

“Aberdeen reporting first sail of the year with #1650 (DF95). Much tuning to do but she floats and didn’t take on water!” Just in time too, more on this boat later.



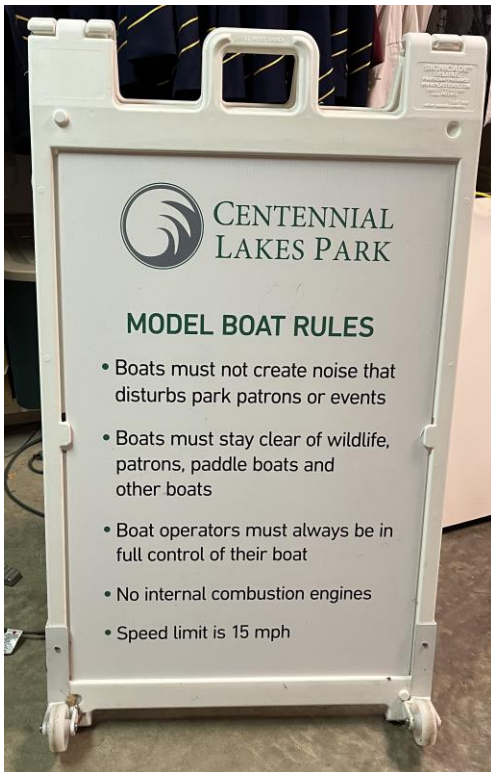
Meanwhile, the ODOMs were getting on with racing and Kevin Kavaney had this to report:

“Six of us showed up in spotty rain to sail at Centennial. The winds were erratic (as usual - JB) but enough to work with. Challenging as it often changed direction and speed (also usual - JB). It was a bit cold but it felt good to be racing again. The last time out with the DF-95's was so brutal that it wasn't much fun but today not at all.

Good to see people again...Kevin”

May 7th was the first really nice Sunday at the center pond, and with it came the first fast electric encounter with a non-club member. It started as usual, the person was at the south end of the middle of the center pond where most boats are on the water, and his boat was in the 24 - 30" +/- class, noisy, but not all that fast. It stayed to the south near the band shell, but made a few runs amongst the other boats. That boat was taken out of the water and a much faster boat was now running - fast, and not staying away from the other RC boats, and paddle boats. I informed the pilot that there was a 15 mph limit on the pond and he seemed to accept that. Longer story shorter, it did not remain that way and a bit later he was angry with me, though I don't know exactly what he said as he was speaking to the rear of me several feet away. I can't really blame him, our sign was not in place at the pond, how was he to know I wasn't blowing smoke in his ear?

Remember this?



If we don't set this sign out at the pond how is the public to know there are rules? We have two options, get the sign out of the cage and bring it to the pond to display (there are wheels to help bring it down), or don't do anything with it and just accept whatever happens at the pond. You can always take your boat out of the water if there is a situation where you are not comfortable with someone else's boat. I know the door to the maintenance building is sometimes locked and you might have to find a park person to let you in, but they are very willing to help us out in this regard, and they will put the board back in the cage at the end of the day for us - very much appreciated. If we display Thursday and Sunday that should take care of most of the situations, and as I am the only one with a key to the building I will try to get there early on Sundays to get the sign out.

At the meeting

I just love it when previous members return to the club. It is allowed to not be a member for a period of time and then re-join up! Much of life is more important than the club and our activities, but our events are sure a lot of fun and provide the break from the rest of the world and a chance to do things with a great bunch of people. Life happens, you can make your plans but..... The club is always here for you and more than delighted to see you again!

Tim Peterson:



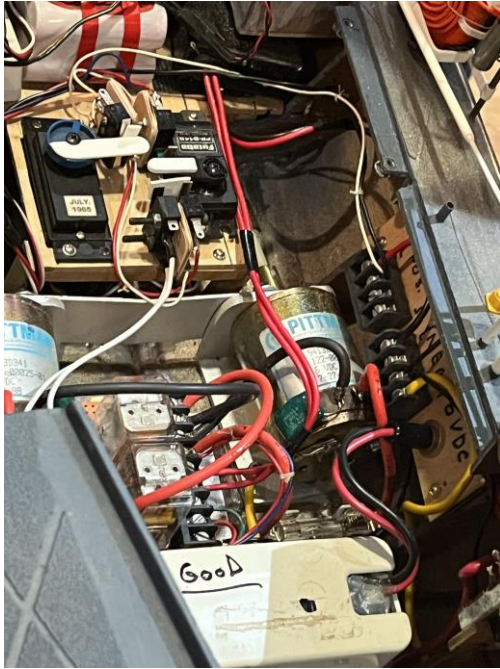
Tim is a devoted RC boat enthusiast and says he might have the largest number of boats in the club in one fleet! As he rattled off the approximate numbers I think good money might be on supporting that claim - though a challenger is in the making, see show and tell below.

Show and Tell

It was lucky for those of us at the meeting, and certainly for Dave Brinkman as he literally just acquired this boat less than a day before the meeting.

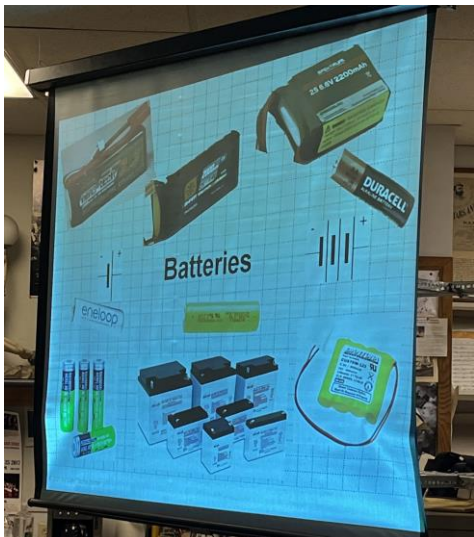


Purchased on line and locally, this boat was built from scratch by a member of the San Francisco RC boat club in the 1960s. Notice the plywood cabinet too! The woman's husband had passed away and she was looking for a home for the boat with someone that would appreciate the work that went into it. And Dave was just that guy. Dave's fleet continues to grow in size and what a great and interesting addition. The detail and electronics inside are pure 1960s and just beautiful:



Hoping that Dave can get this up and running using everything as-is. Unfortunately for us, Dave is not able to attend the Parade because his daughter is graduating from the FBI academy in D.C. that same weekend (how cool is that!?!), so we will probably have to wait awhile to see this boat again in person.

Gary Tschautscher provided an excellent talk with his power point presentation on all things battery.



Nominal Voltages / 0°C

	Nominal	Discharged	Charged
PbAc	2.0	1.95	2.1
NiCad	1.25	1.0 (0.9)	1.55
NiMH	1.25	1.0 (0.9)	1.55
LiPo	3.7	3.0	4.2
LiFe(P04)	3.3	2.5	3.65

Discharge Voltage is the minimal allowable voltage (empty) rating and not recommended.

This was an incredible and comprehensive presentation! It would be impossible to highlight all the information Gary presented. Here are just a few of the things of note:

- Batteries are in good condition if they are at no less than about 80% of their capacity. Then they need to be charged up.
- Get a good charger, and one with good instructions.
- Treat your batteries well and don't abuse or overuse them and they will last much longer (i.e. you will get many more charge cycles).
- NiCad batteries are of the past, though they still work fine. The new NiMH batteries are much superior, and LiFe batteries are preferable to LiPo, and have inherently much better stability. Leave LiPo's to the specific needs of specialty RC crafts, i.e. airplanes and fast boats. Lead acid (PbAc) are great in many boats since the weight is frequently useful for ballast.
- If you have an older boat with older electronics, it was probably set up to use NiCad (or even NiMH) batteries, and you want to use the newer LiFe batteries, they might work out just fine but due to the higher volts per cell the older electronics might fail. Just something to be aware of.

Gary certainly has a great understanding of batteries being a RC airplane enthusiast too, so if you have questions of any sort about batteries I am sure he would be happy to give you his point of view.

Regatta

A DF 95 Regatta was hosted by a Wisconsin club in Tomah (where I 90 and I 94 come together) last weekend. Three sailors represented the EMYC: Tony Johnson, Terry Mackey, and Dave Geovannini. Tony took 7th place, Terry 2nd place, and Dave 12th out of 16 sailors. Here is some of the action:



This is race 20, and that is Tony in first place on the far left and Terry in second behind him.

Here is Dave's report that he sent to me:

“It was a great event with beautiful weather - wind was a bit light but we managed to get 30 races in. Tom and his team did a super job between site, food and competitive sailing. Terry upheld the honor of the club with some excellent sailing finishing second overall just two points behind the winner. Terry also gave me some rigging tips as well which was much appreciated.

You missed a good one but hopefully more sailors will make the 2024 regatta.”

Having a regatta this close to home and hosted by another club is an infrequent occurrence, but such is the appeal of the Dragon boats, DF65 and DF95, their popularity is spectacular and they are in clubs all over the country.

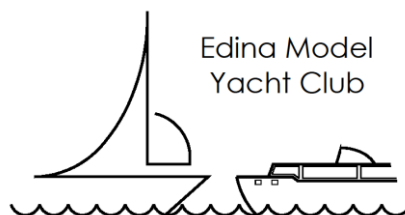
Coming up

June is a very busy month and there is a lot of events coming up.

- Thursday, June 1st, Janet Clark with her impaired adults will be at the ponds from 6:30 pm - 8:00 pm. This is an annual event and all we need to do is share out boats with her people. This involves a very quick explanation of how the boats work and then usually some of the group would like to run a boat for a bit. Interesting that there is always at least two that are very interested, but year to year it is not the same people! Just two or three of us need to be there and I am sorry to say that there have been years that I was the only one. I think we can do better than that.
- Sunday, June 11th, Parade of boats. 10:00 am to 4:00 pm. Set up starts around 8:00, and as usual there will be drinks and food in the break room. We will have a “For Sale” area again so bring items you would like to offer up for sale.
- Tuesday, June 20th, Members Meeting, STARTING THE SUMMER SCHEDULE with a start time of 8:00 pm to allow for time on the water before the meeting.
- Saturday, June 24th, White Bear Lake Classic and Vintage Boat Show: 10:00 am to 4:00 pm at the White Bear Lake Shopping Center. Contact Rob Segal with any questions or other information. New 10' x 20' awning this year!

Here we go with the year 2023! It is going to be a great year at the EMYC! Hope you can join in some of the events. What a great club!

John Bertelsen
Commodore
Edina Model Yacht Club



Vice Commodores: Gary Tschautscher, Rob Segal, David Brinkman
Treasurer and Membership: David Brinkman
Sailboats: Tony Johnson
Scale Modeling: Kevin Waldo
Website: David Petrich
EMYC and ODOM Forums: Gary Tschautscher
DF 95 forum: Burt Fischer
Dry Dock Party, Spring Breakfast: Terry Bertelsen, Julia Moen
Face Book: Richard Dahlquist, Todd Moen
Off site events: Rob Segal