



# SAIL & SCALE

NEWSLETTER OF THE EDINA MODEL YACHT CLUB

May 1996

Volume 5, Number 5

**Commodore's Corner:** April 21st marked the start of our season. We gathered to welcome the exhibitors from the toy boat show. The winds were strong but the lake was finally liquid. A great meeting, as always.

May brings events not to miss. The first, All Boats Relay (5/5, 2:00-4:30) is an event that teams up all participants and their boats. This event is used by many boat clubs as a way for club members to meet new members and enjoy boating as a group. This is open to everyone, sail, electric, steam, large and small. Bring as many boats as you wish, the more the better.

The second event, the Big "E" (5/18 1:00-3:00) is an event to test the skill level of scale boat captains. Boats are required to navigate a course set out on the lake. A must event for those captains planning to harass the resident geese all summer.

*Jeff McCabe*

**Last Chance!:** Memberships of those who have not paid the \$10 supplemental dues fee for the remainder of the 1996 calendar year will expire at the end of this month. A membership extension form is enclosed for those who have not yet acted. Hesitate no longer!

**First Outing:** Luther Disher and Tom O'Dell of the St. Louis Admirals were joined by eight club members at the South Pond on Sunday (4/21) following the Toy Boat Show in Hopkins. Tom's 42 inch Hartman tug "Atlas" with "hyperdrive" (Astro 40, belt reduction drive, 12 volts with 6 volt booster) is a forty pound fast electric. This unofficial first event of '96 was topped off by the maiden voyage of George Pfeifer's Great Lakes Whaleback, "John Ericsson". Quite a sight!

**Where's The Meeting?:** Centennial Lakes Centrum.

**What's The Meeting?:** Painting and finishing...both of which start when you open the box. Plan ahead. Do not wait until the model is complete to start putting the finish on. Wooden decks should be stained and sometimes partially finished before they are glued in place. Glue will seal the porosity of the wood and not let stain soak in, resulting in a white or off color spot.

Many of the smaller parts can be finished before assembly, thus leaving a sharper looking edge where two different colors join. Remember the finish is only as good as the preparation. If you are working with wood and a metal looking finish is what you want, then the wood porosity must be filled before painting. Sealing the wood will help stop feathering of the grain, making it easier to sand. Sometimes it is better to start the finish on a wooden part before it is removed from the die cut sheet, especially if it is very small. This also

helps keep the third world plywood from splintering. Don't forget to seal both sides of wood.

If you are going to paint the hull, say on a *Fairwind*, (ABS plastic) it is necessary to remove the release agent that was used to help in the plastic molding. Solvents such as acetone, MEK, mineral spirits, denatured alcohol, lacquer thinner or the like will help. However be careful, they may attack the plastic so try a test piece of plastic first. Use only with adequate ventilation! Do the cleaning outside with plenty of fresh air. Also for gluing onto plastic follow the same procedure. After cleaning the plastic surface use a fine sandpaper, 600 or finer, to lightly sand the surface. This helps the paint get a mechanical grip onto the plastic. Fiberglass will need the same type of surface preparation. More on finishing at the next meeting. (May 21st)

*Dave Bros*

**Ready For The Millennium:** The Edina Model Yacht Club now has its own homepage on the world wide web, courtesy of your editor's son. If you have access, give it a look. Very neat, Pat, thanks!!

**Competition:** The Wisconsin Maritime Museum will hold its twentieth annual Model Ships & Boat Contest & Symposium on August 3rd & 4th. For a brochure, send a SASE to: Isacco Valli, Curator, Wisconsin Maritime Museum, 75 Maritime Drive, Manitowoc, WI 54220

*Glenn Anderson*

**Early News!:** This newsletter is two weeks earlier than usual in an attempt to get the word out to all members to join in the All Boats Relay which will take place this coming Sunday (see sked of events). *Jeff McCabe*

**Honkers:** At least one pair of Canada geese has taken up residence at the pond as of mid April. That means fifteen dwelling by June. Don't forget Tom Shirley's advice in the previous issue.

**Spring Ahead!:** Spring is here and it's time to tune-up the reflexes. The Spring Big "E" will be held at the south pond on Saturday, May 18th from 1:00PM until 3:00PM. Get those boats out of Winter storage and limber up. See you there!

*Gary Phillips*

**Big Event:** Our grand affair of the year, The Parade of Model Boats is just one month away. Please call Dan Proulx [redacted] to offer your assistance.

**Thanks:** To Glenn, Dave & John for your input, (ed.)

**Membership Meeting, 4/16/96:** Jeff McCabe announced that buoys would be set a week from Saturday (4/27). He asked for volunteers to coordinate obtaining shirts and hats for members because of new members joining and wanting these items. Jeff said that the garage area where the club stores some items, boats, etc. may be insecure and open to possible theft. He asked for ideas about what to do to make the area more secure. None were presented at the meeting. Dan Proulx discussed the

upcoming Parade of Boats and handed out Parade posters and flyers to volunteers to distribute to hobby stores. Dan asked for further volunteers for the day of the show to sign up after the meeting. Business adjourned.

Technical presentations followed: (1) Fast electrics by D.Campbell, D.Proulx. (2) Radio control and electrical setups for sailboats and electric boats by J.Bishop. *Doug Campbell*

### Schedule of Upcoming Events

		Every Sunday	Open Boating	4:30PM - 9:00PM
		Every Tuesday	Open Boating	5:30PM - 9:00PM
		Every Thursday	Open Boating	5:30PM - 9:00PM
May	5th (Su)	All Boats Relay	South Pond	2:00PM - 4:30PM
	18th (Sa)	Big "E" Spring	South Pond	1:00PM - 3:00PM
	21st	Membership Meeting	Centrum Bldg.	7:00PM - 8:00PM
June	9th (Su)	Parade of Boats	Centrum Bldg.	11:00AM - 3:00PM
	18th	Membership Meeting	Centrum Bldg.	7:00PM - 8:00PM
	23rd (Su)	Fast Electric	South Pond	2:00PM - 4:30PM
	29th (Sa)	Golden Gate Scale Concours	San Francisco MYC	
	30th (Su)	Crowley Cup (model tugs only)	San Francisco MYC	

**Gatherings:** The Tugboat Enthusiasts Society of the Americas had its sixth annual meeting over the weekend of April 19-21 in New Orleans, LA. One hundred participants from 23 states, Halifax, N.S. and the Virgin Islands attended. Friday featured an eight hour bus tour to the south and west of the city visiting Port Fourchon, the Bollinger Shipyard in La Rose, and Quality Shipyards in Houma.

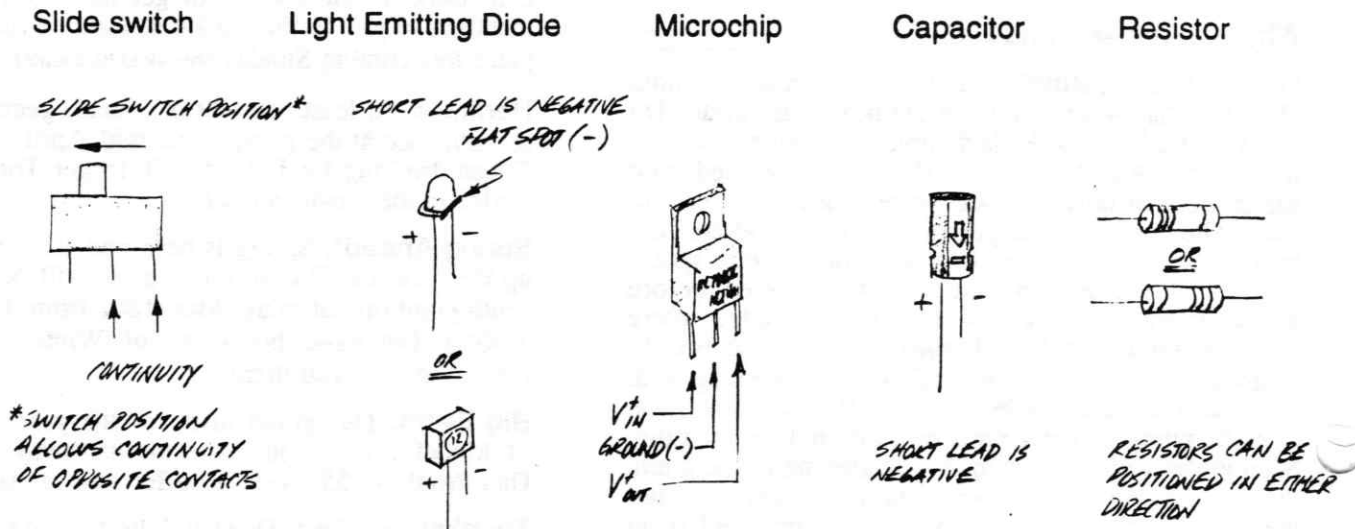
On Saturday, a three hour harbor tour was made on the participant's choice of tugboats, the *Darlene Bisso*, *Scott T. Slaten*, *Dee White* or *Miriam Walmsley Cooper*. The Parade of Boats which followed was the highlight of the event. A dozen boats attempted to outdo each other firing water monitors, blowing horns and maneuvering to best advantage to try to win the hearts of the Beauty Contest judges. Eastman Kodak was the big winner!

Corinne and I received coffee mugs at the Saturday banquet as the attendees coming from the farthest west. I believe that the folks from Texas really deserved that honor, but who am I to turn down a free gift? The weekend was certainly Great Fun! Olympia, WA is in the cards for next year.

*Jim Smith*

**Builder's Corner:** Microglass has added a 78 foot Great Lakes Steam Tug fiberglass hull and plan set to its 1:32 lineup of 15 hulls. This new hull measures out at 29 1/4 inches, with a 6 1/2 inch beam. For a catalog, send \$3 to: Microglass, 2960 Pearce Road, North Tonawanda, NY 14120

**Notes On Electrical Components** for Voltage Regulator shown on page five:



# '96 Parade of Model Boats-Final Details

by John Bishop

The Parade of Model Boats show will take place on Sunday, June 9th, from 11:00 AM to 3:00PM, with the setup beginning at 10:00AM. The show is planned to provide entertainment for the general public and to introduce the hobby of radio controlled model boating. But equally important, it is a chance for our club members to meet new people, display and run all types of boats, and have some fun for an afternoon. It is our club's main event of the year and has proven to be very enjoyable and rewarding for those that have participated. Be advised that even if it does rain, the Parade Show continues, as an indoor display until the weather cooperates and permits us to run outdoors.

The show is organized in a way that will expose, up close, all aspects of the hobby. For the entire time of the show, a membership/general information table will be staffed by club members to answer specific questions about R/C boating, a building area will reveal current projects under construction, and an indoor display within the Centrum building will allow the public to view all of the boats up close when they are not running on the water. In an attempt to create an entertaining show for running, a schedule has been organized that provides a chance for all types of boats to be operated during the early afternoon hours. For those of you who have experienced previous parade shows you may notice that the show has been condensed from previous years. It was found that the show was very popular from 11:00 AM until around 3:00 PM, but for the remainder of the program until around 7:00 PM both EMYC membership and public participation lacked. As a result, we are attempting a new schedule that we hope will be very successful and uphold a high level of interest for the four scheduled hours.

The following is the **schedule of events** for Sunday, June 9th:

<b>10:00 AM</b>	<b>Setup</b> indoor membership, building, and display areas. Setup outdoor running and frequency control areas. Setup and test outdoor P.A. and music systems. Display signs
<b>10:50 AM</b>	<b>Club Meeting</b> in Centrum building. Review schedule, frequency use, answer questions, etc.
<b>11:00 AM</b>	<b>Indoor Display</b> within the Centennial Lakes Centrum Building. All boats will be on display. This is a great opportunity for club members to get reacquainted again and browse around the room to see new projects. It also a great time for the general public to collectively see all the boats and builders in one place. Final running preparation can include buffing, battery charging, and tweaking
<b>12:00 PM</b>	<b>Parade Show</b> including an individual display and introduction to each boat. Also known as the on-the-water presentation of the boats from the Edina Model Yacht Club. A general introduction to the club and the hobby of radio controlled boating will be presented throughout the parade show. All boats will be attempted to be run and changed out so as to show the variety and diversity of R/C boats among the membership of the EMYC. Open boating will fill any remaining time as needed.
<b>12:30 PM</b>	<b>Military Boats</b> flotilla including PT's, destroyers, battleships, a sub, etc.
<b>1:00 PM</b>	<b>Fairwind Fleet</b> demonstration and racing events
<b>1:30 PM</b>	<b>Fast Electric Boats</b> display of individual high speed boats and several group racing events
<b>2:00 PM</b>	<b>Electric and Steam Boats</b> running types includes tugboats, work boats, cruisers, pleasure craft, barges, paddle boats, steamers, etc.
<b>2:30 PM</b>	<b>Other Sail Boats</b> includes anything other than a Fairwind. AC-914, Marblehead, EC12, Schooners, Sloops, etc. are all invited.
<b>3:00 PM</b>	<b>Open Boating</b> relaxing post-show open running for EMYC members and Parade show guests



The **indoor display** is a great opportunity for you to show your boat(s) within the Centrum building and you are encouraged whenever not running to have your boats in this area. It will be protected by EMYC members at all times and certain areas of the room will be roped off to provide extra protection for those that want non-public-contact protection for their models.

The **membership/general information** table will provide a focal point for information about the hobby of radio controlled boating, the organization of the Edina Model Yacht Club, and information about the group and its activities. It will also act as a resource area for handing out literature. This area will be located in the entry of the Centrum building.

The **building projects** table will also be located in the Centrum Building on the south side. If you are currently in the process of dry dock construction and would like to give people the "shop view" of your boat, please bring it along. This often gives those not associated with the hobby a better understanding of the time and effort involved in finishing a boating project.

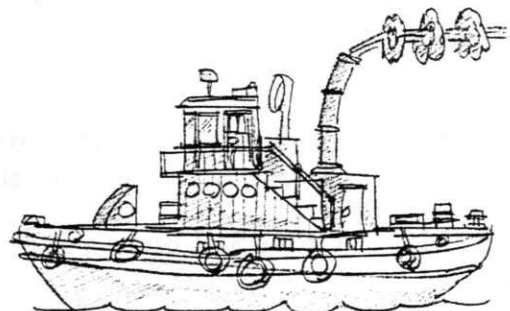
**Frequency Control** will allow us to track 36+ channels for independent operation of the boats. The frequency board will be used and if you run you will need to have a clip attached to your transmitter antenna displaying the frequency you're on. If you have finished running, please return the clip promptly. Conflicts will be resolved by sharing the available time for an event, or by changing out crystals. The EMYC has five additional crystals that can be loaned out, but if you have extra personal crystals please bring them as well. Transmitters may be stored in a protected area within the Centrum building free from public access, but each radio remains the personal responsibility of its respective owner. Charging and repairs may also take place within this area.

**Involvement** within the Parade of Model Boats is a rewarding part of the show. A lot of enthusiasm is usually generated during this event and the more you become involved the more you'll enjoy this event. Three different areas will be staffed by members-- membership/general information, frequency control, and the indoor display-- and if you would like to sign up for a one hour time slot in any of these areas please attend the upcoming May meeting or call Dan Proulx [REDACTED]. Additionally, if you would be interested in helping out in any other way for the Parade show please let the club know.

**Additional items** in no particular order: Food is also available from the surrounding complex and covers everything from fast to fine dining. Members and guests will be able to relax within an environment of couches and chairs (behind the scenes) throughout the day. Benches will be set up outside for spectators' comfort. Paddle boats will be rented out but will not be allowed to run beyond the flagged-off area just North-East of the Centrum building. The water of Centennial Lakes is treated by the City of Edina and will hopefully be weed-free.

This newsletter is sent out to club members, local hobby shops, and several R/C boating clubs in surrounding areas. If you are not a club member but would like to participate in this event, please feel free to attend and run with us. No advance reservation is required, but if you would like us to know that you are coming or if you need more specific information than what is listed in this newsletter you may write to the Edina Model Yacht Club, Centennial Lakes Centrum, 7499 France Avenue South, Edina, Minnesota 55435, or call John Bishop [REDACTED] or Dan Proulx [REDACTED].

Please plan to attend the **May 21st Meeting** at 7:00 PM for a review of the '96 Parade of Model Boats show. We'll discuss last minute items of concern and welcome comments from the membership in the final planning stages of our event. If we don't see you at the meeting, we'll see you at the show!



## Voltage Regulator:

By John Bishop

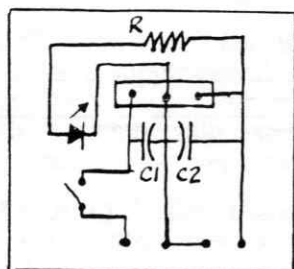
**Description:** Eliminates the need for separate receiver batteries when another boat power supply exists. The device allows an input of from 5 volts DC to 36 volts DC to provide a constant 5 volts DC output. The maximum current through the circuit is 3 Amps. If 3 Amps is exceeded, the circuit automatically shuts down and restarts when the circuit has cooled. The circuit has an on-off switch that turns power on and off to the receiver, allowing other boat functions such as lighting to operate independently of the radio receiver. (The Double Pole feature of the switch provides redundancy - two switches in parallel -for the radio power supply). When the green LED light is "on", it indicates that 5 volts DC is being delivered to the receiver output terminal bar.

Parts:	1) Circuit Board, 1 3/4" x 1 3/4"	Radio Shack	276-148	(2 / 1.49)
	2) 4 Position Terminal Bar	ABC Electronics		
	3) Miniature Slide Switch (DPST or DPDT)	ABC Electronics	275-407	(2 / 1.19)
	4) 35 Volt, 10 micro farad capacitor (C1)	ABC Electronics	272-1025	(.59ea.)
	5) Threaded Screw and Nut	Hub Hobby	276-1371	(1.39ea.)
	6) Motorola 78T05ACT (3 Amp.)Microchip	Motorola	276-1770 (Note: 1Amp chip)	
	7) 1 1/2" Heat Sink	Digi-Key	276-1363	(.99ea.)
	8) High Brightness Green LED	ABC Electronics	276-022	(2 / .99)
	9) 100 Ohm, 1/2 watt Resistor	Radio Shack	271-1108	(5 / .49)
	10) 16 Volt, 47 micro farad capacitor (C2)	ABC Electronics	272-1027	(.69ea.)
	11) 20 Gauge electrical wire (input)	AxMan		
	12) Futaba (or similar) Male plug and wire (output)	Hub Hobby		

**Tools Needed:** Soldering iron, fine rosin core (electrical) solder, drill with small bits and small wire cutters.

**Note:** ABC Electronics and AxMan are local, Minneapolis - St.Paul surplus stores. Most items can be searched out at Radio Shack or electronic suppliers such as Digi-Key. Radio Shack part numbers are shown for some components.

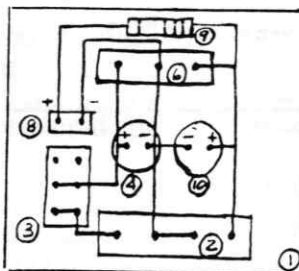
Circuit Diagram:



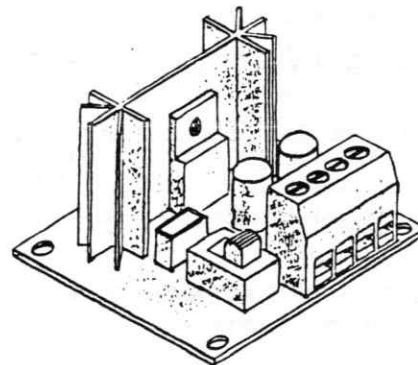
$V_{IN}^+$   $V_{IN}^-$   $V_{OUT}^-$   $V_{OUT}^+$

Board Layout:

(Top View)



3-D View:

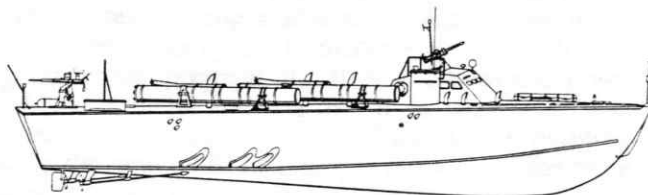


### Assembly Sequence:

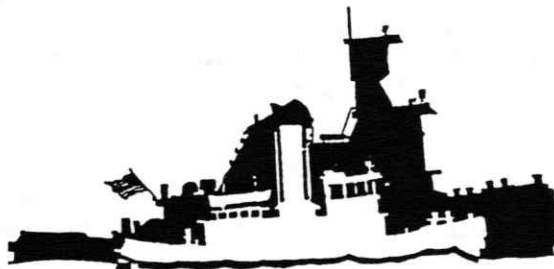
- |     |   |      |   |
|-----|---|------|---|
| • 1 | gather and layout all electrical parts          | • 9  | secure switch                                 |
| • 2 | file/sand edge of electrical board              | • 10 | secure LED                                    |
| • 3 | cut and strip 20 gauge input wires              | • 11 | secure microchip & heatsink                   |
| • 4 | desolder switch harness (if installed)          | • 12 | secure 35 volt, 10 micro farad capacitor      |
| • 5 | apply heat sink compound to back of microchip   | • 13 | secure 16 volt, 47 micro farad capacitor      |
| • 6 | secure microchip to heat sink                   | • 14 | secure 100 ohm resistor                       |
| • 7 | secure 4 position terminal bar to circuit board | • 15 | trim back of circuit board and file/sand flat |
| • 8 | drill out circuit board to accept switch        | • 16 | test circuit                                  |

### Name The Ship Contest:

#3



#4



# May Meeting Notice:

(Third Tuesday of the Month)  
**Tuesday, May 21<sup>st</sup>**  
**7:00 P.M.**  
Centennial Lakes  
Centrum Building

Commodore:	Jeff McCabe
Vice Commodore	Dave Bros
Vice Commodore	Doug Campbell
Vice Commodore	Mikio Kirihara
Vice Commodore	Dan Proulx
Treasurer	Gary Phillips
Newsletter Editor	Jim Smith

---

EDINA MODEL YACHT CLUB  
CENTENNIAL LAKES CENTRUM  
7499 FRANCE AVENUE SOUTH  
EDINA, MN 55435

**First Class**